



Bandera Pass Gold Corp.

The New Gold Rush in New Brunswick, Canada

Technical Review
October 2nd, 2021



Precious Metals Exploration
Annidale Gold Belt, New Brunswick, Canada
Caledonian Highlands, New Brunswick, Canada



Forward Looking Statement

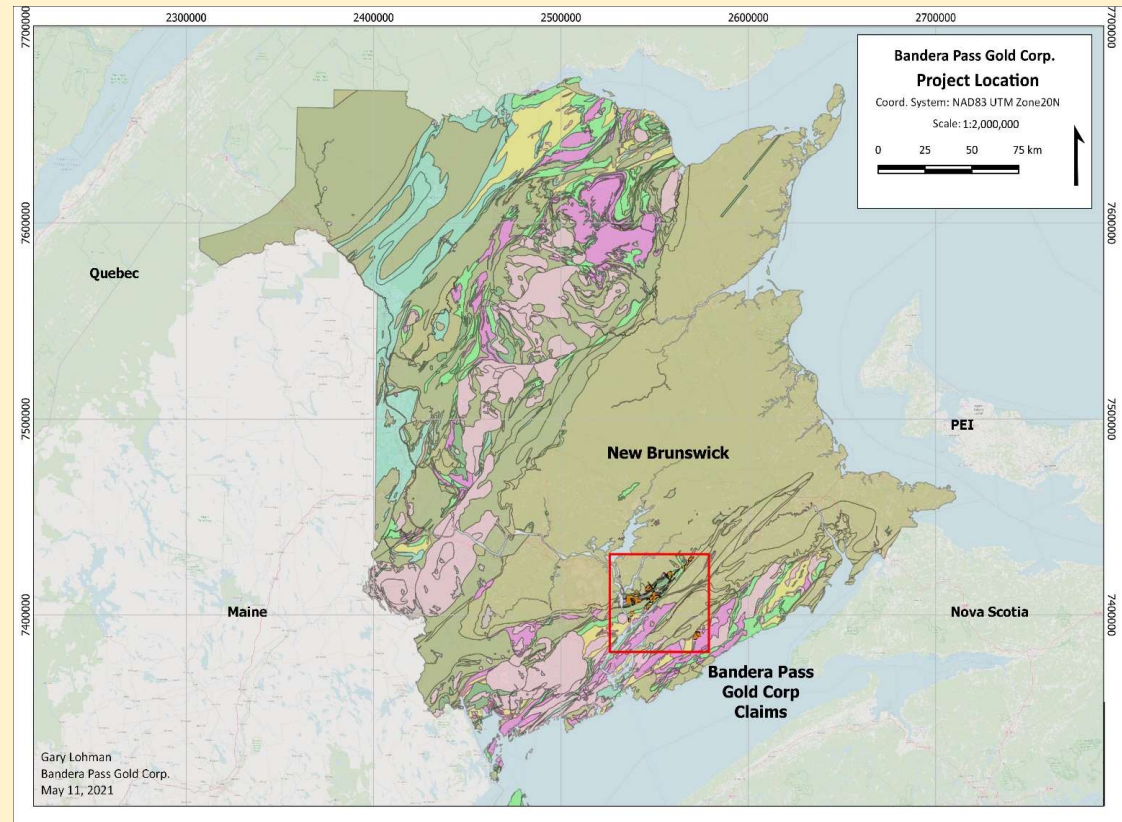
The opinions, estimates, and/or projections contained herein are those of Bandera Pass Gold Corp. as of the date thereof and are subject to change without notice. Bandera makes every effort to ensure the contents contained herein have been compiled or derived from sources believed reliable and contain information and opinions, which are accurate and complete. However, Bandera Pass Gold Corp. makes no representations or warranty, express or implied, in respect thereof, takes no responsibility for errors or omissions which may be contained herein and accepts no liability whatsoever for information and its contents. The information contained herein is not to be construed as an offer to sell or solicitation for an offer to buy any securities.

The officers, directors or employees may from time to time acquire, hold or sell securities mentioned herein.



Annidale Gold Belt - Geology

- Approximately 70 km long northeast-trending belt of rocks that lie just to the north of the interpreted Gander-Avalon cryptic suture
- The Annidale Belt comprises a Cambro-Ordovician volcano-sedimentary belt of rocks that are mineral rich, hosting approximately 50 gold and/or base metal occurrences
- The Belt lies just to the north of a major tectonic boundary, the related faulting playing an important role with respect to mineralization, possibly in conjunction with the emplacement of felsic intrusions



Annidale Gold Belt

- Located in southwestern New Brunswick, the Annidale Gold Belt is an emerging Gold District with over 300 square kilometers of ground covered by both major companies and local prospectors.
- The Belt is over 70 kilometers in length and holds 3 historic deposits, the Old Dick Copper Mine, Devil's Pike Gold deposit, the Bald Hill Antimony deposit and over 50 mineral occurrences (Au, Ag, Cu, Zn, Pb, Sb)
- In the southwest, Globex's Deposit at Bald Hill defined 1 million + tonnes grading 4.65% Antimony (Sb) and associated gold
- Approximately 8 kilometers east, Globex's Devil's Pike Gold deposit outlined 93,000 ounces of gold hosted in a structurally controlled vein system
- Extensive exploration outside of these 2 main deposits has been conducted, defining the size and scale of the overall system
- Bandera Pass Gold Corp. holds approximately 30% of the Annidale Belt in 4 large project areas
- South of the Annidale Belt, Bandera has the Silver Mountain and Gold Mine Gully projects, historic assays running 7 oz/t silver, 2% copper and an estimated 14 g/t gold (1850's)
- Mining friendly jurisdiction, with deep history of exploration and mining and talented labour pool
- Excellent infrastructure, including extensive highway networks and a deep water port at Saint John

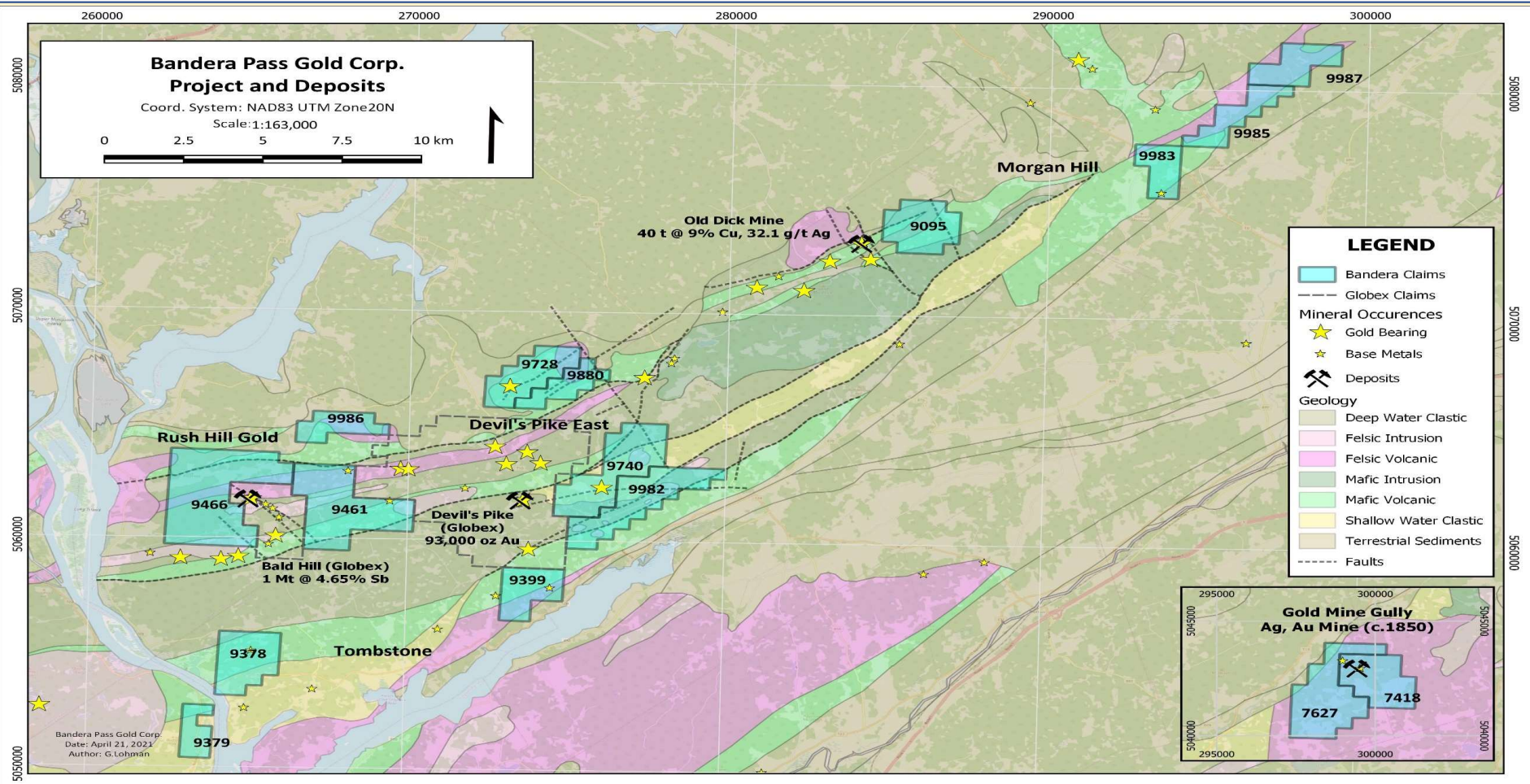


Introduction

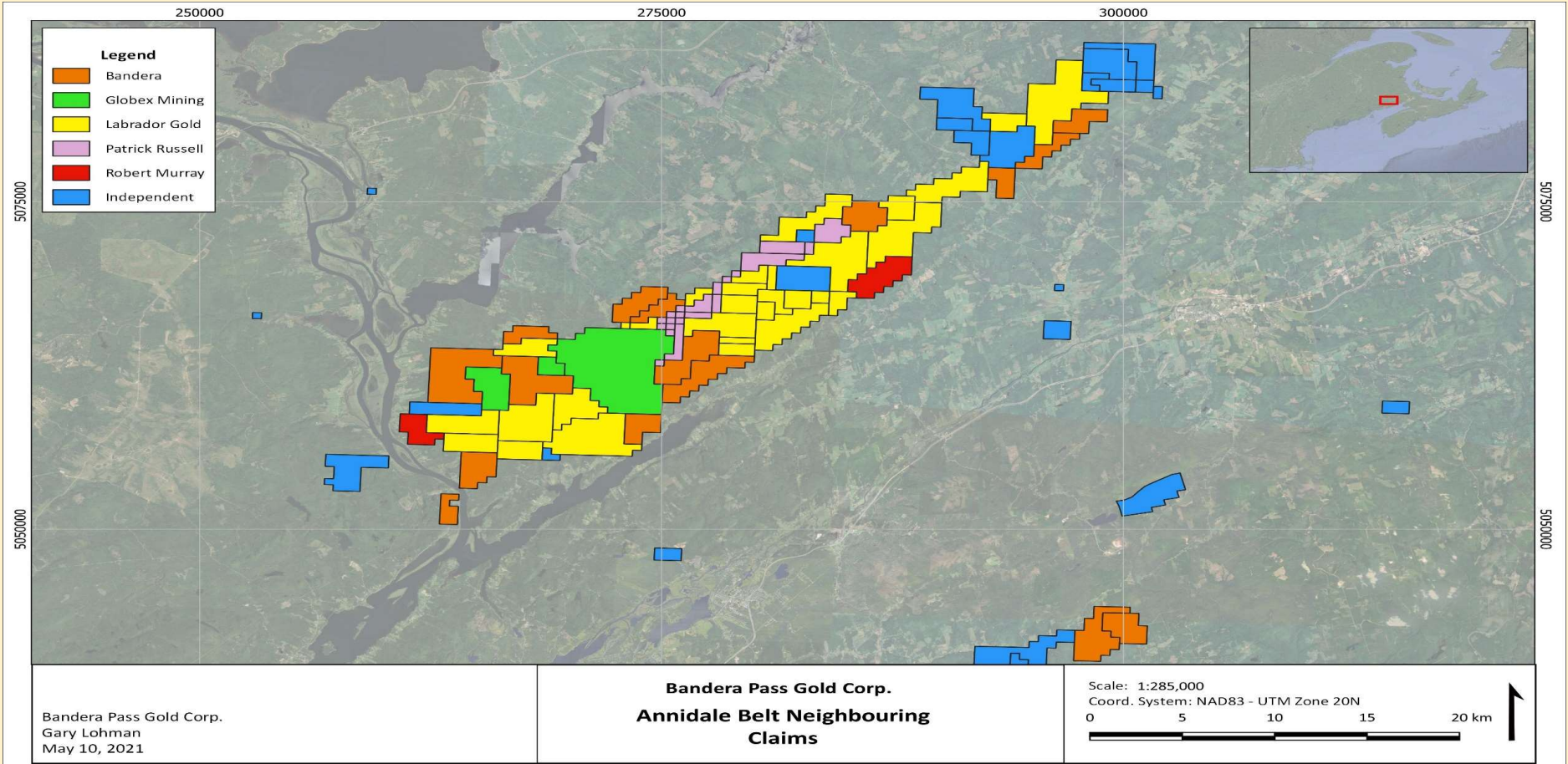
- **Bandera Pass Gold Corp. (Bandera)** is a Private Canadian junior Exploration Company focused on *Precious and Base Metal Exploration* within and surrounding the Annidale Belt, New Brunswick, Canada
- The **Annidale Gold Belt (AGB)** is quickly becoming one of the most important areas for Gold exploration in Atlantic Canada and has several old mines and many registered mineral occurrences throughout the Belt
- **Devil's Pike East Project** consists of two large claim blocks that surround Globex's Devil's Pike Gold (Au) Deposit. The project is located near the Gander-Avalon boundary that hosts several occurrences which exhibit features typical of Orogenic Lode Gold deposits. This project has spectacular assays from a set of quartz veins related to faulting
- **The Rush Hill Gold Project** consists of two large claim blocks that surround the Globex's Bald Hill Antimony (Sb) deposit. Regional faulting and the host felsic intrusion extends onto the Bandera claims and is highly prospective for antimony and base / precious mineralization
- **The Gold Mine Gully/Silver Mountain Project** contains an area that was an active Silver (Ag), Copper and Gold (Au) mine from the 1850's. The properties are contiguous and located in the Caledonian Highlands of southeastern New Brunswick
- **Tombstone Gold Project** has historic gold values up to 10.8 g/t Au in float and 10.0 g/t Au in concentrated Stream silts
- **Morgan Hill Gold Project** fault related copper in contorted sediments



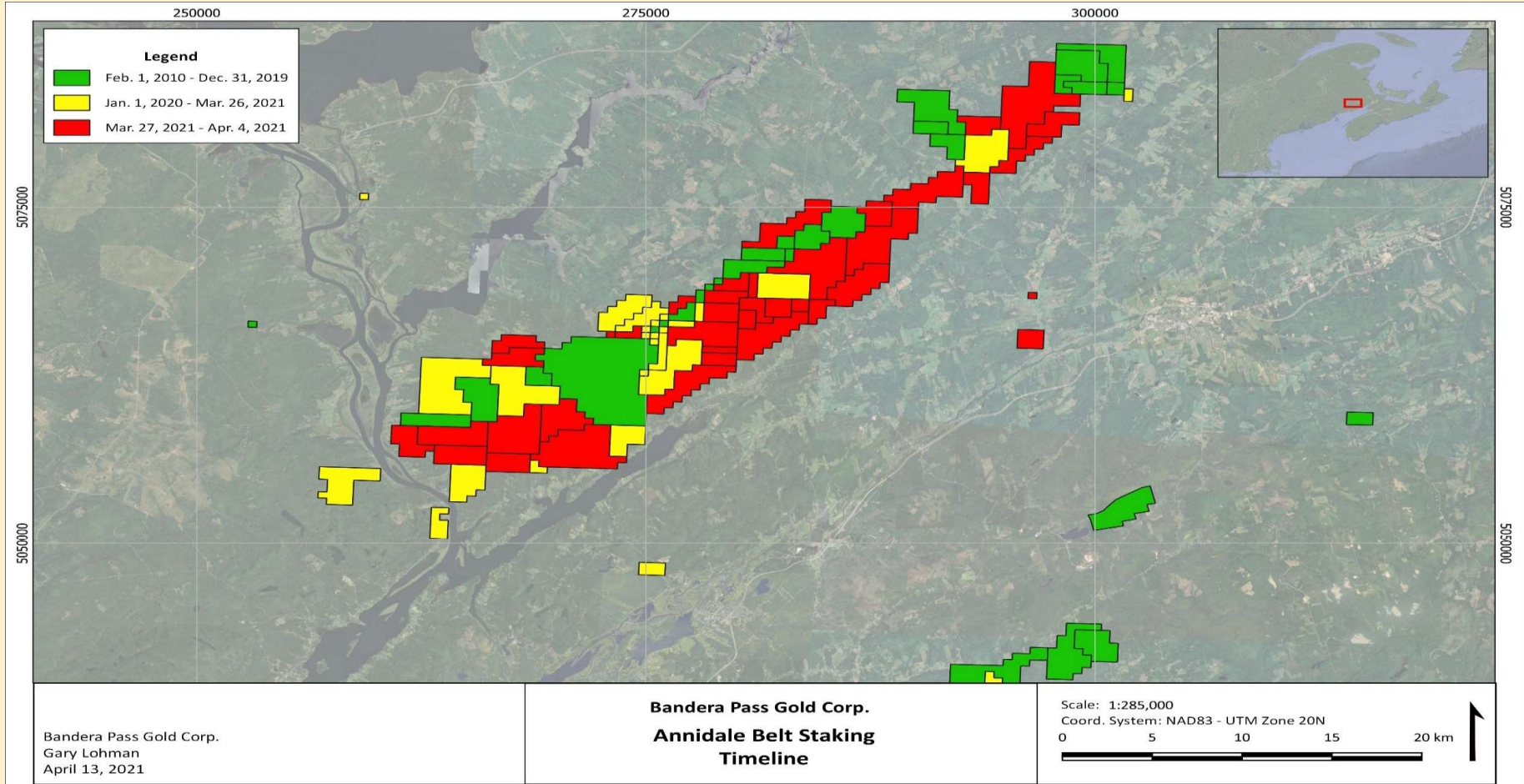
Annidale Gold Belt - Geology



Who are our Neighbours ?



Annidale Gold Rush - Claims Staked Between March 27 – April 4, 2021

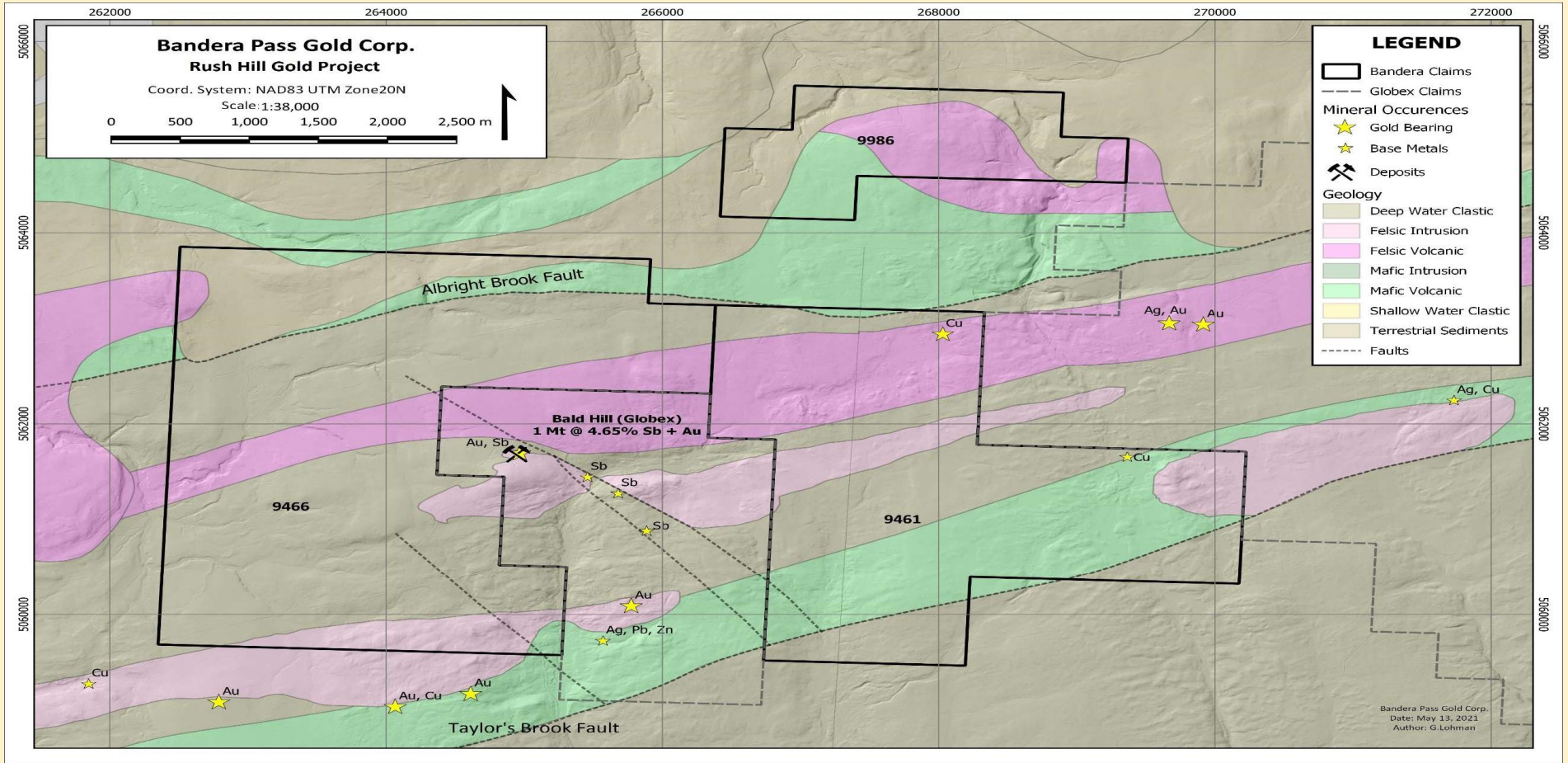


Rush Hill Gold:

- 104 claims on 3 separate blocks located on the southwest end of the mineral rich Annidale Gold Belt, surrounding the Bald Hill Antimony Deposit (1Mt @ 4.65% Sb) and adjacent to the Devil's Pike Gold Deposit (93,000 oz Au), both held by Globex Mining Enterprises Inc.
- Deposits related to major faults and felsic intrusions; the host rocks and related regional structures of both deposits extending on to Bandera's claims
- 13 Gold (Au), Silver (Ag), Antimony (Sb) and Copper (Cu) mineral occurrences on and adjacent to the project area
- UAV magnetic survey planned to delineate the geological units and main fault structures that host the Au and Sb mineralization
- Prospecting and geological mapping to follow
- Received New Brunswick Prospectors Assistance Grant, 2021



Rush Hill Gold Project

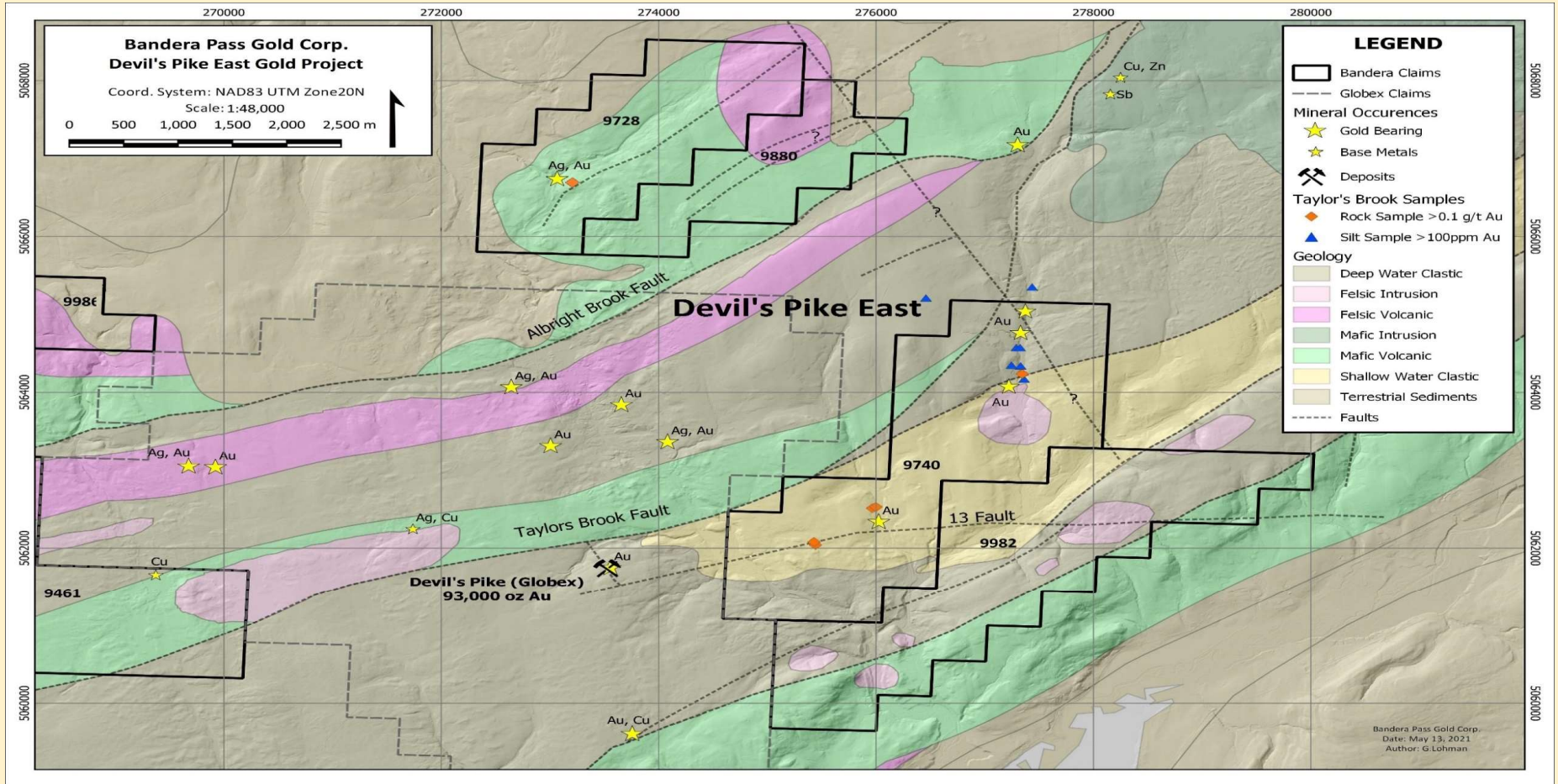


Devil's Pike East

- 94 contiguous Claims on 2 blocks, the properties located in the centre of the Annidale Gold Belt, surrounding the east and north boundaries of Globex's Devil's Pike Deposit property
- On Claims 9728 and 9880, Henderson Brook follows the trend of a NE-SW trending fault cutting altered mafic volcanics and metasedimentary rocks
- At Arseno Falls, several large quartz veins, up to 6 meters in width, cut the units hosting silver mineralization (Ag), arsenopyrite (As), pyrite (Fe), sphalerite (Zn), chalcopyrite (Cu) and galena (Pb)
- Best sample assayed at 38 ounces silver, 0.79% Cu and minor gold
- Recent sampling returned 0.5 g/t Au, 0.79% Cu, 0.18 % Sb
- Soil, rock and silt sampling over the past 40 years highlighted several untested targets within the project area that require follow-up
- Claims 9740 and 9982 lay 2 kilometers directly east of Globex's Devils Pike 93,000 oz Au deposit; a N-S trending vein system between the E-W trending "Taylor's Brook Fault" and "13 Fault". Both of these faults cross onto Bandera's property
- Property is dominated by Henderson Brook and East Scotch Settlement sediments and the East Scotch Settlement mafic volcanics
- Taylor's Brook is a linear brook that trends N-S between the Taylor's Brook Fault and 13 Fault, same as Devil's Pike East Deposit
- Elevated silt and rock samples along the brook indicate there is potential for significant gold and copper mineralization
- Along the 13 Fault, several rock samples returned elevated gold



Devil's Pike East Project

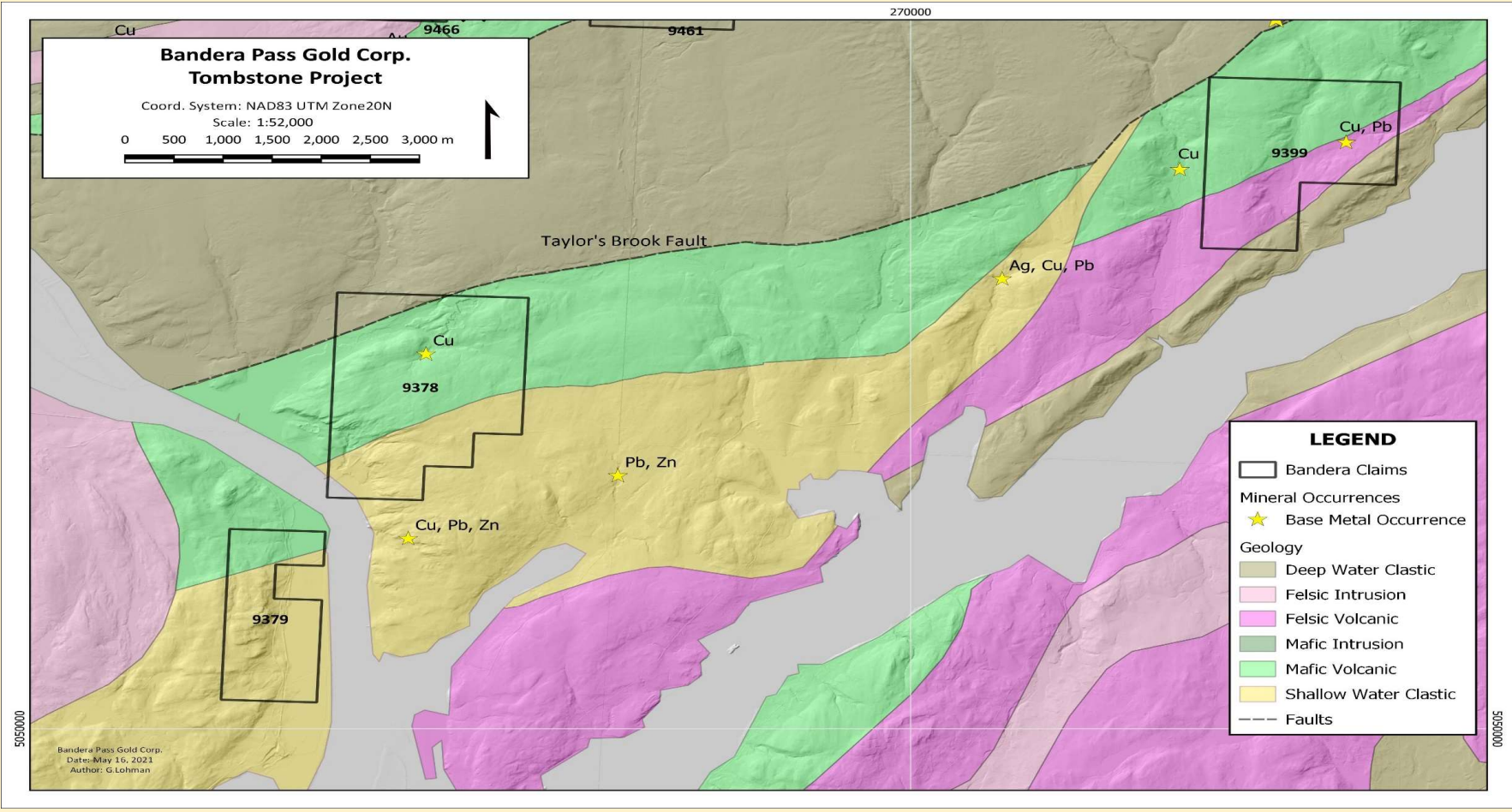


Tombstone Gold Project:

- 46 claims in 3 blocks located south and east of Globex's Bald Hill Antimony and Devil's Pike Gold deposits where base metal mineral occurrences are found hosted by volcanics
- To the south, historic exploration identified up to 10 g/t Au in concentrated stream silts, the heavy mineral samples containing visible gold
- Recent sampling located Au in both float and silt samples draining the creeks
- To the east, fault related epigenetic veins host Cu and Pb mineralization
- Float samples have returned up to 10.8 g/t Au (0.35 oz)

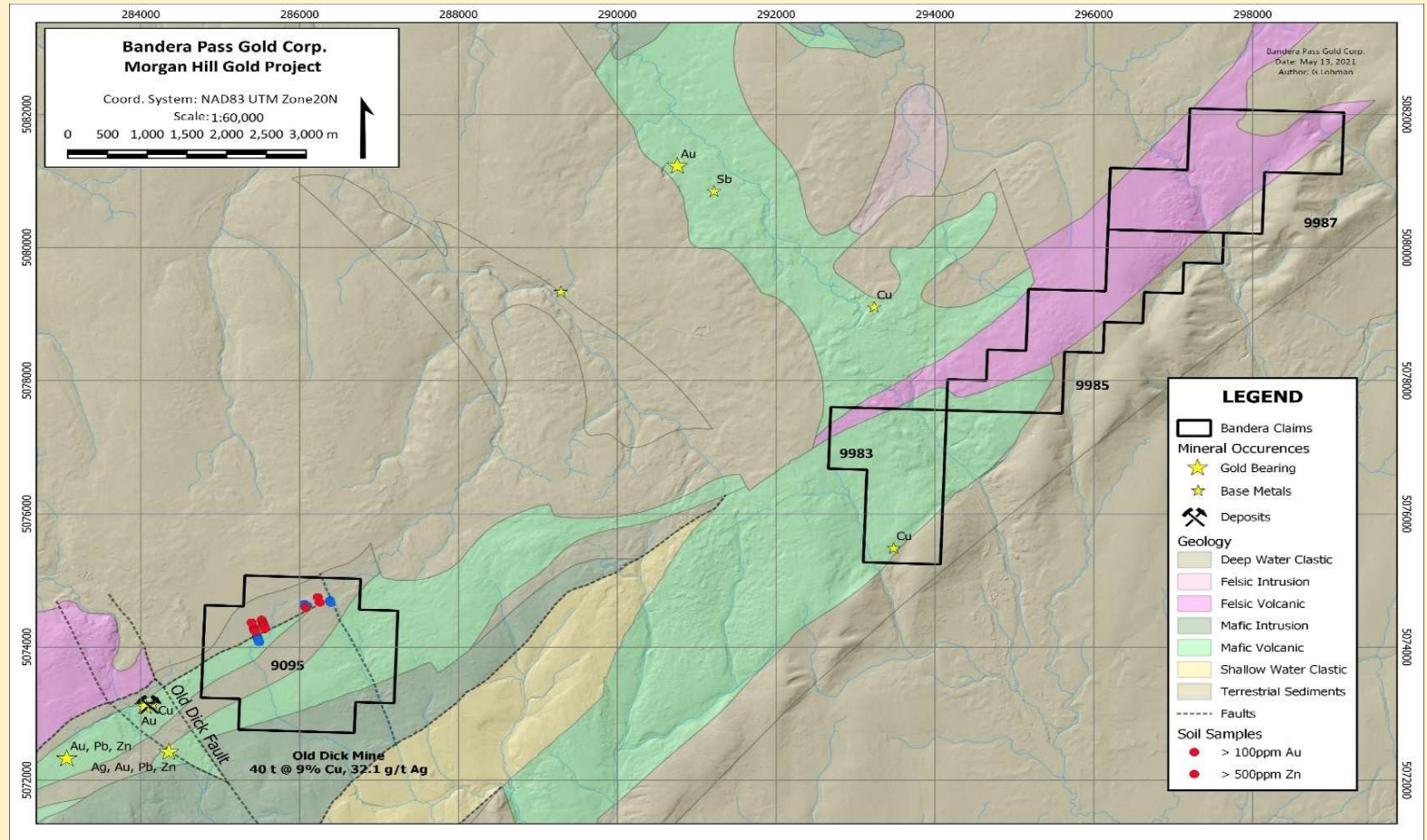


Tombstone Project



Morgan Hill Project:

- 73 claims on 4 blocks located in the northeast extension of the Annidale Belt
- Greenfield exploration along the northeast extension of the Taylor Brook fault, a regional structure with both previous and base metal mineral occurrences along strike to the southwest
- Several mineral occurrences, Au, Sb and Cu, are found in mafic volcanics to the northeast, a block of which is present in the southern portion of the project area
- Received New Brunswick Prospectors Assistance Grant, 2021

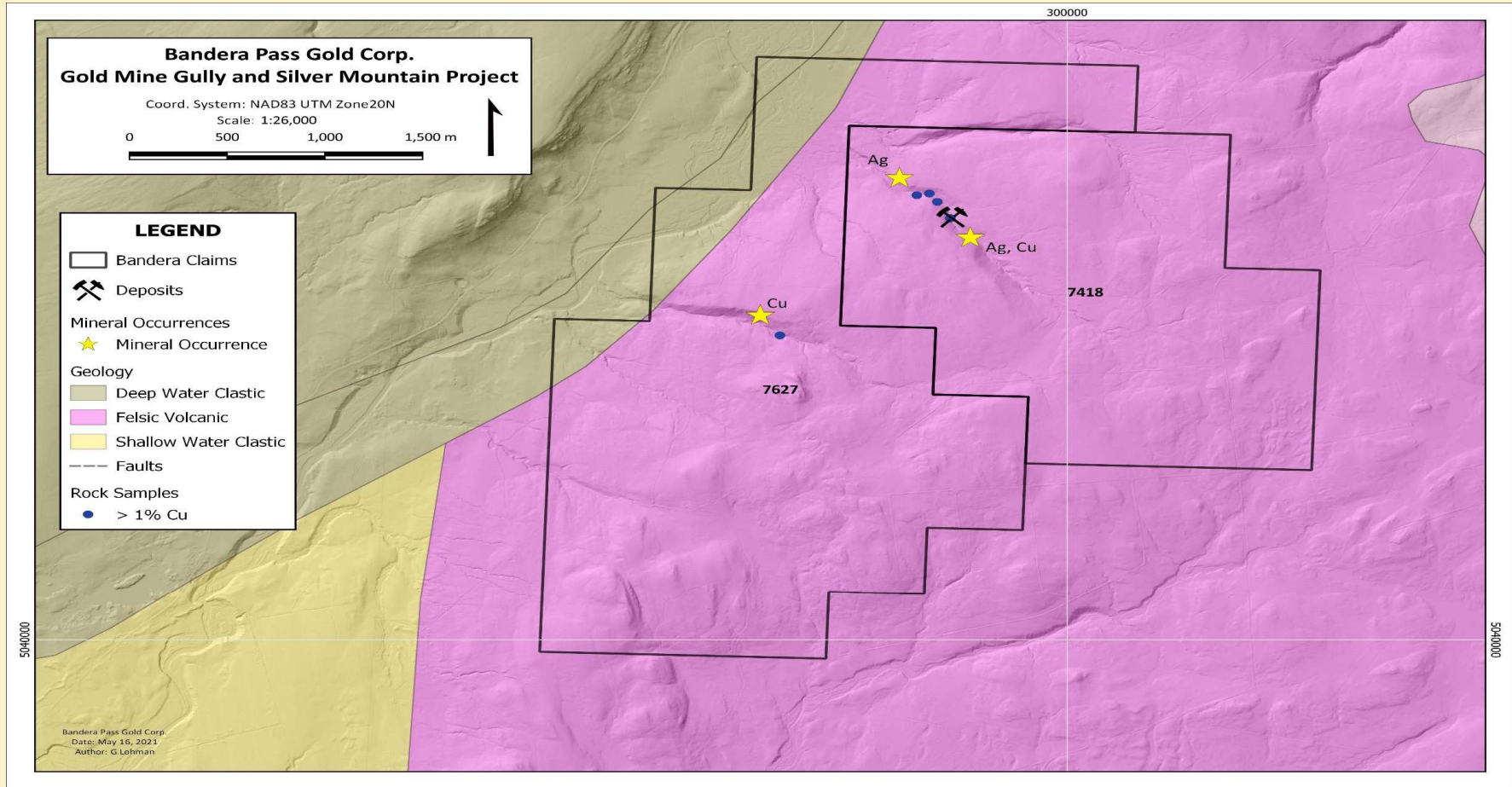


Gold Mine Gully and Silver Mountain:

- Located in the northern Caledonian Highlands, approximately 35 km south of the Annidale Gold Belt. The project is comprised of 50 contiguous Claims on two blocks
- Boulders were discovered containing 3.4 ounces silver leading to the discovery of a high-grade Cu-Ag-Au vein that was actively mined in the 1850's. Actual tonnage is unknown
- More recently, mineralized float and veins were discovered that resulted in limited trenching and shallow channel sampling. Assaying of grab samples containing pyrite, chalcopyrite (Cu), bornite (Cu₂S), galena (Pb), silver (Ag) and barite (Ba)
- Boulders containing 2 oz Ag and 1.5 % Cu are found within Gold Mine Gully
- The more recent discovery of multiple mineralized veins with significant copper, silver and lead mineralization southeast and west of the original mine site has extended the original mineralized zone an additional 1 kilometer in multiple directions
- Rock samples include:
 - 7.1 oz silver + 3.1% Cu, 2.7% Cu, 2.47% Cu
 - Many assays greater than 1.0% Cu
- The source of the high grade silver has not been discovered



Gold Mine Gully and Silver Mountain Project



- **Rush Hill Gold Project:**
 - UAV Magnetics to define the major faults and felsic intrusions related to the mineralization
 - Prospecting and soil sampling along priority target horizons identified by the 3D Analysis of the magnetics
 - Priority targets to be trenched or drilled
- **Devils Pike East Gold Project:**
 - UAV Magnetics to define the geologic contacts and favourable fault structures
 - 3D analysis of the magnetics will identify the primary and secondary fault systems
 - Prospecting and soil sampling intermediate to the faults will target quartz vein systems similar to Devil's Pike
- **Gold Mine Gulley / Silver Mountain Project:**
 - UAV Magnetics and 3D interpretation to locate the extent of the newly discovered mineralized zone
 - Prospecting, soil and / or stream silt sampling and geological mapping of priority targets
- **Tombstone Gold Project:**
 - Prospecting and silt sampling to validate the historical results
- **Morgan Hill Gold Project:**
 - Basic prospecting and soil / stream silt along and proximal to major fault structures targeting copper mineralization
 - Geophysics over priority targets.



Bandera Pass Gold Signs Strategic Agreement with EarthEX GeoPhysical Solutions (MB) AI & 3D Modeling Analysis



BANDERA PASS GOLD

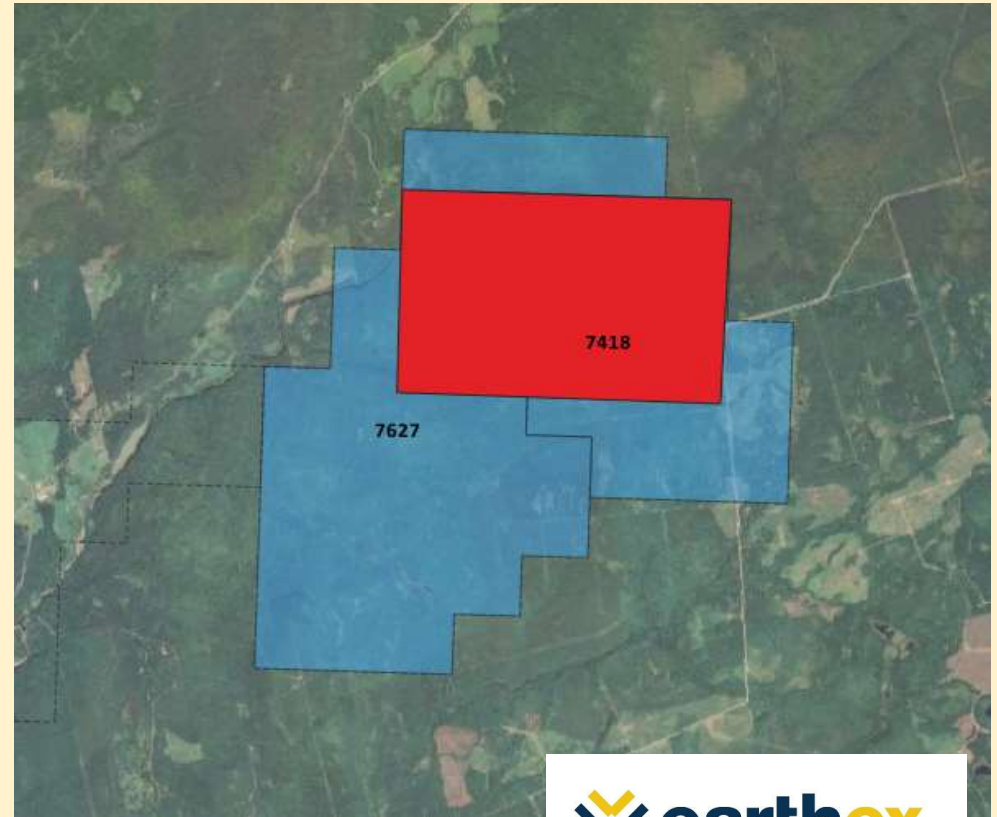
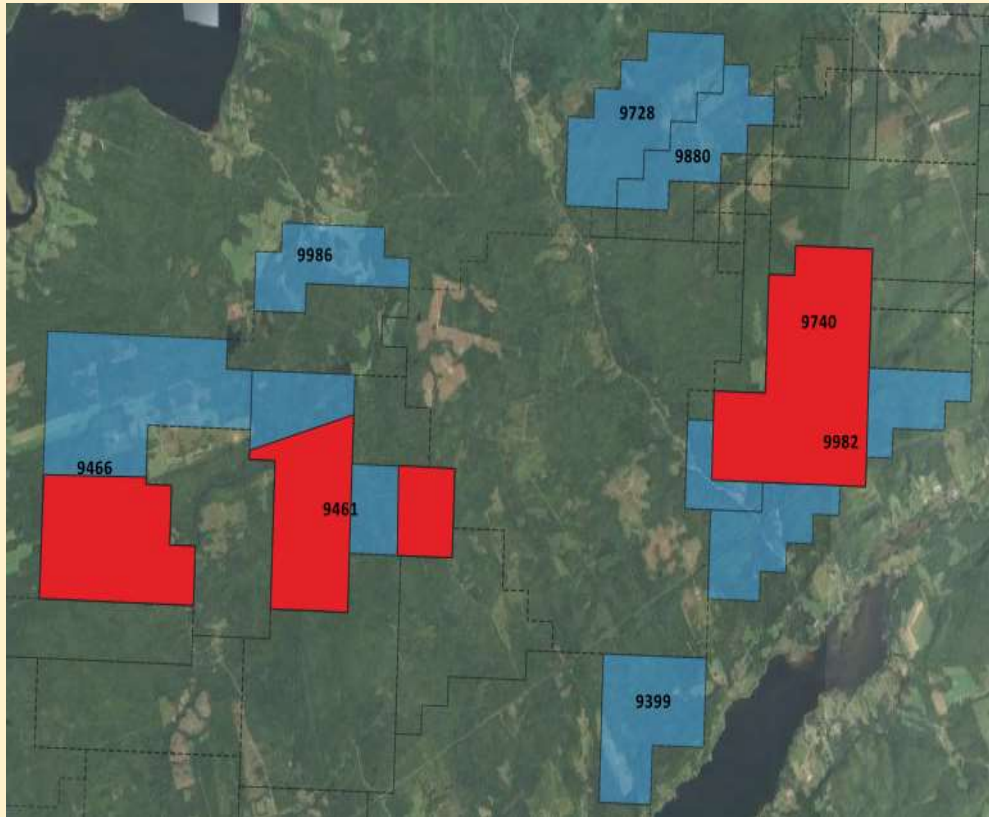
Signs Agreement with
EarthEX GeoPhysical Solutions



- Bandera Pass Gold Signs Strategic Partnership with EarthEX Geophysical Solutions (MB) for Artificial Intelligence & 3D Analysis - Interpretation Modeling
- Initiated 1st Stage of UAV Aerial Surveying over :
 - (Rush Hill Gold, Devils Pike East Gold & Gold Mine Gully)
- To Define the extension of the Bald Hill Antimony Deposit and satellite deposits on our properties (Eastern/Western Flanks of Bald Hill Deposit) – (Rush Hill Gold)
- To explore the Eastern/Western extensions of Devils Pike Deposit and Fault Trend (Devils Pike East Gold)
- To define the extent of the recently discovered mineralized zone at Gold Mine Gully
- To define the stratigraphic boundaries and structural controls of the larger Annidale Fault System



EarthEX GeoPhysical UAV Exploration Plan 2021 (UAV – Rush Hill Gold, Devils Pike East Gold & Gold Mine Gully)



Bandera UAV Grids (Red) to be flown using EarthEX's UAV Borne Magnetics



2021 FIELD TRIP – (GOLDMINE GULLY – SILVER MOUNTAIN)

- Main Vein, Gold Mine Gulley
- Historic assays up to 106 g/t Ag and 1.5% Cu
- Visible copper mineralization including Chalcopyrite, Bornite, Malachite, Azurite and Tenorite.
- Locally abundant, coarse grained Galena (top left, next slide) High Lead Results Expected
- Crosscutting veins visible suggesting multiple pulses of mineralization
- Numerous quartz vein splays and rubble along the creek
- NEW uncovered vein outcrop located in Brook 800 meters north of the Main Vein
- 17 samples submitted to BV Labs for assay



2021 FIELD TRIP (GOLDMINE GULLY – SILVER MOUNTAIN) SAMPLES



2021 FIELD TRIP – (DEVIL'S PIKE EAST)

- Mineralization discovered in 1989, initial grab sample within a 6 m wide vein system assaying 1182.86 g/t Ag, 0.55 g/t Au, and 0.79% Cu
- Multiple rusty, hematized vein swarms, breccia and quartz vein rubble found along Henderson Brook
- Intensely Pyritized volcanics / Gossans along the Brook
- Historic soil survey identified 3 separate soil anomalies along Henderson Brook with elevated Au, As and Cr
- 13 soil samples analyzed by XRF, results confirming elevated Cr.
- 17 rock samples submitted to BV labs for Multi-element assay



2021 FIELD TRIP – (DEVIL'S PIKE EAST)



- The 13 Fault (right) is a parallel structure to the Taylor's Brook Fault, the faults bounding Globex Mining's Devils Pike Gold deposit (93,000 ounces inferred) to the west
- 8 stream silt samples collected along Taylor's Brook, north of the Taylor's Brook Fault
- Samples submitted to BV Labs for Au and multi-element analysis



Patrick J. Cruickshank, MBA

President & CEO

Mr. Cruickshank is the Founding – President & CEO of Bandera Pass Gold Corp.

Mr. Cruickshank, received his MBA at Canada's Highly Prestigious York University – Schulich School of Business. Patrick brings a wealth of experience from the Private Wealth Management Sector, Protecting & Managing Wealth for over 15 years @ Merrill Lynch, Citigroup Capital Markets, Smith Barney and Legg Mason to name just a few. Patrick was an NFLPA Financial Advisor for over a decade helping financially educate, wealth creation & Long-term wealth preservation strategies for NFL Professional Players and their families.

Mr. Cruickshank also serves on the Boards of:

Atacama Copper Exploration (Canada & Chile)

Fiddlehead Mining Corp (NB, Canada)

Thistle Resources Corp (NB Canada)

Royal Stewart Resources Corp. (NB, Canada)

Minotaur Atlantic Exploration Ltd (NS, Canada)

Mr. Cruickshank specializes in establishing and growing companies, driving shareholder value through a long-term business strategy from inception to growth to exit. Mr. Cruickshank is often invited to speak @ Resource Summits in Canada, Chile, Peru, London & Germany. Patrick is an active Panel Guest Speaker of the Toronto Stock Exchange Venture (TSX-V) & the Santiago Stock Exchange (SSE) Industry Events. Mr. Cruickshank is frequently interviewed on Radio Show & Industry Publications within the Resource Sector.

Mr. Cruickshank, is a Former Canadian Olympic/U23 Soccer Player and US NCAA D1 Collegiate Player. Patrick is also a very highly decorated US & Canadian Coach, from being a Professional Soccer Player to coaching Canada's Women to University of Mississippi to US Olympic Development Staff Coach. Patrick holds his US Soccer "A" License & Canadian National Coaching Licenses.

Patrick now enjoys coaching his 6 children in Texas.



Management & Technical Team

Gary Lohman, B.Sc., P.Geo

COO & SVP Director of Exploration

Mr. Lohman is a Founder and Chief Operating Officer of Bandera Pass Gold Corp. As an exploration geologist, he has 40 years of experience in both precious and base metal exploration within the Americas Management experience within and outside of the mining industry.

Skilled in geological, geochemical and geophysical exploration techniques in a wide variety of settings including Volcanogenic Massive Sulphides (VMS), Porphyry & IOCG (Copper/Gold) Style Deposits. Experience includes evaluations / research conducted on bonanza grade and bulk tonnage gold-silver properties in Canada, Mexico, California, Ecuador & Chile. Evaluated and conducted research on a variety of Industrial mineral projects including graphite, titanium, zeolites and building stone.

Mr. Lohman is also the President of Atacama Copper Exploration Limited in Chile. A Private Canadian Exploration Company focused on Large Scale IOCG – Cobalt Exploration.

Gary also holds several Board Positions:

Atacama Copper Exploration Limited, Minotaur Atlantic Exploration Limited, Thistle Resources Corp.,
Royal Stewart Resources Corp & Fiddlehead Mining Corp.

Gary is based in Bathurst, New Brunswick throughout the year, conducting exploration in addition to working with various agencies within the provincial government including the Department of Mines and Forestry.



DANIEL CARD, P.GEO, RP.GEO, PRESIDENT

EARTHEX GEOPHYSICAL SOLUTIONS INC.

EarthEX Geophysical Solutions Inc was founded in 2014 in Selkirk, Manitoba, Canada by its Chief Geophysicist, Daniel Card. Mr. Card, P.Geo, RP.Geo, a professional Geophysicist, holds a BSc. Honours Degree from the University of Manitoba and is currently registered in Canada and Australia.

His career started with Xstrata (now Glencore) where he worked his way up to Project Geophysicist at Raglan Mine in northern Quebec, and then went on to serve at Xstrata's Western Australian operations Cosmos and Sinclair in the Leinster-Wiluna nickel camp, where he played a key role in the discovery and definition of the 9 MT Odysseus Nickel Sulphide Deposit, which is soon going into production for Western Areas Ltd.

Following his tenure at Xstrata, he went on to work as Senior Geophysicist for Southern Geoscience Consultants in Perth, WA, where he served as the staff electromagnetics specialist. He also served as the technical lead on many mineral exploration projects. He continued as a senior technical consultant to Abitibi Geophysics and an expert peer reviewer for the journal "Exploration Geophysics".

At EarthEX, we are specialized in geophysical prospecting, data interpretation, 3D modelling and target definition for hard-rock minerals. We work with cutting edge technologies and data analysis methodology.

In the search of all mineral commodities for projects across the globe, Daniel has worked extensively with geophysical data of all varieties. Particularly, unique experiences that he holds close to the heart include; training local scientists in the use of geophysical equipment in the VMS regions of Eritrea, and an internship at NASA's Lunar and Planetary Institute where he analyzed ground penetrating satellite radar data from Mars' polar regions.

Since its inception, EarthEX has gained widespread recognition for its scientific accomplishments for its clients & partners.



Management & Technical Team Structure

Patrick J Cruickshank, MBA
President & CEO, Director
Chairman of the Board
York Univ. – Schulich School of Business (MBA)

Gary Lohman, B.Sc., P. Geo.
Director of Exploration & COO, Director
Technical Advisory Committee
University of Toronto

Daniel Card, B.Sc., P.Geo, RP.Geo
Technical Advisory Committee
Univ. of Manitoba

Michael O. Jaynes, B. Sc., P. Eng, C.P.R.
Environmental Engineer
Technical Advisory Committee
Colorado School of Mines, Co

Kieran Cruickshank, B. Eng,
Civil Engineer,
Technical Lab Analyst
University of Edinburgh, UK

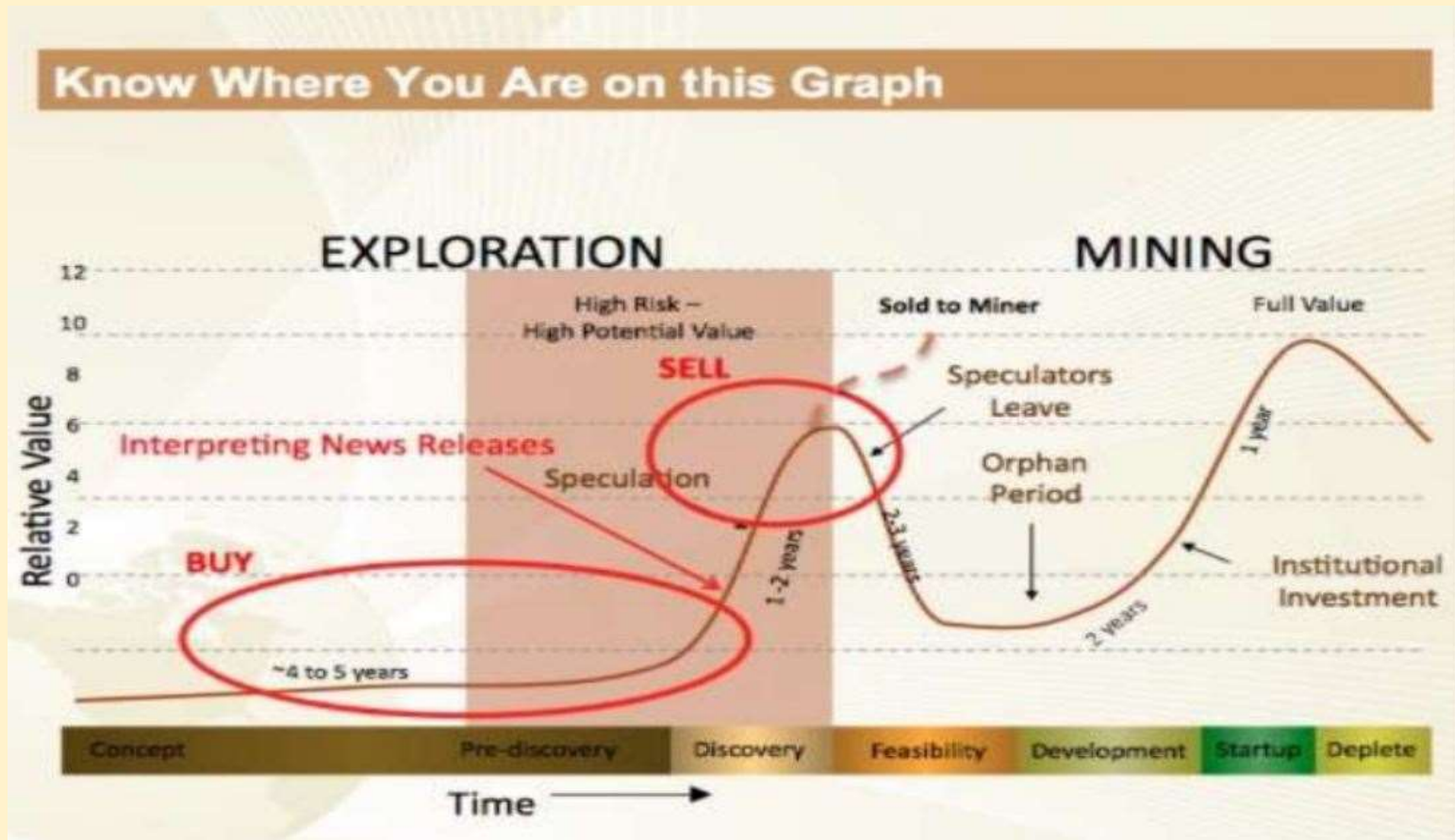
Legal Counsel: Boughton Law PC
(British Columbia)

Legal Counsel: Byrne, Lenihan
(New Brunswick)

Bandera Pass Gold Corp.
58 Rue Du Moulin, Nigadoo, NB, E8K 3R8
506-804-6117



Know "The Investor Life Cycle"



For Enquiries Contact:



**PATRICK J. CRUICKSHANK, MBA
PRESIDENT & CEO**

patrick@banderapassgold.com
506-804-6117



**GARY LOHMAN, P. GEO
DIRECTOR OF EXPLORATION, COO**

gary@banderapassgold.com
905-299-8552

