



# Bandera Pass Gold Corp.

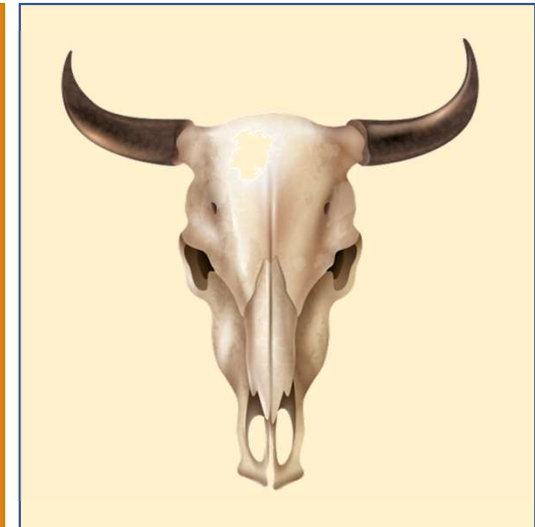
Critical Minerals & Precious Metals Exploration

Annidale Gold Belt, New Brunswick, Canada

Caledonian Highlands, New Brunswick, Canada

Bathurst Mining Camp, New Brunswick, Canada

Technical Review  
June 1<sup>st</sup> 2023



Bandera Pass Gold Acquires Osisko Metals' VMS Projects in the World Famous Bathurst Mining Camp (BMC)

Camelback Mountain – Wildcat Brook – Orlo Brook & Mount Cox



## Forward Looking Statement

The opinions, estimates, and/or projections contained herein are those of Bandera Pass Gold Corp. as of the date thereof and are subject to change without notice. Bandera makes every effort to ensure the contents contained herein have been compiled or derived from sources believed reliable and contain information and opinions, which are accurate and complete. However, Bandera Pass Gold Corp. makes no representations or warranty, express or implied, in respect thereof, takes no responsibility for errors or omissions which may be contained herein and accepts no liability whatsoever for information and its contents. The information contained herein is not to be construed as an offer to sell or solicitation for an offer to buy any securities.

The officers, directors or employees may from time to time acquire, hold or sell securities mentioned herein.



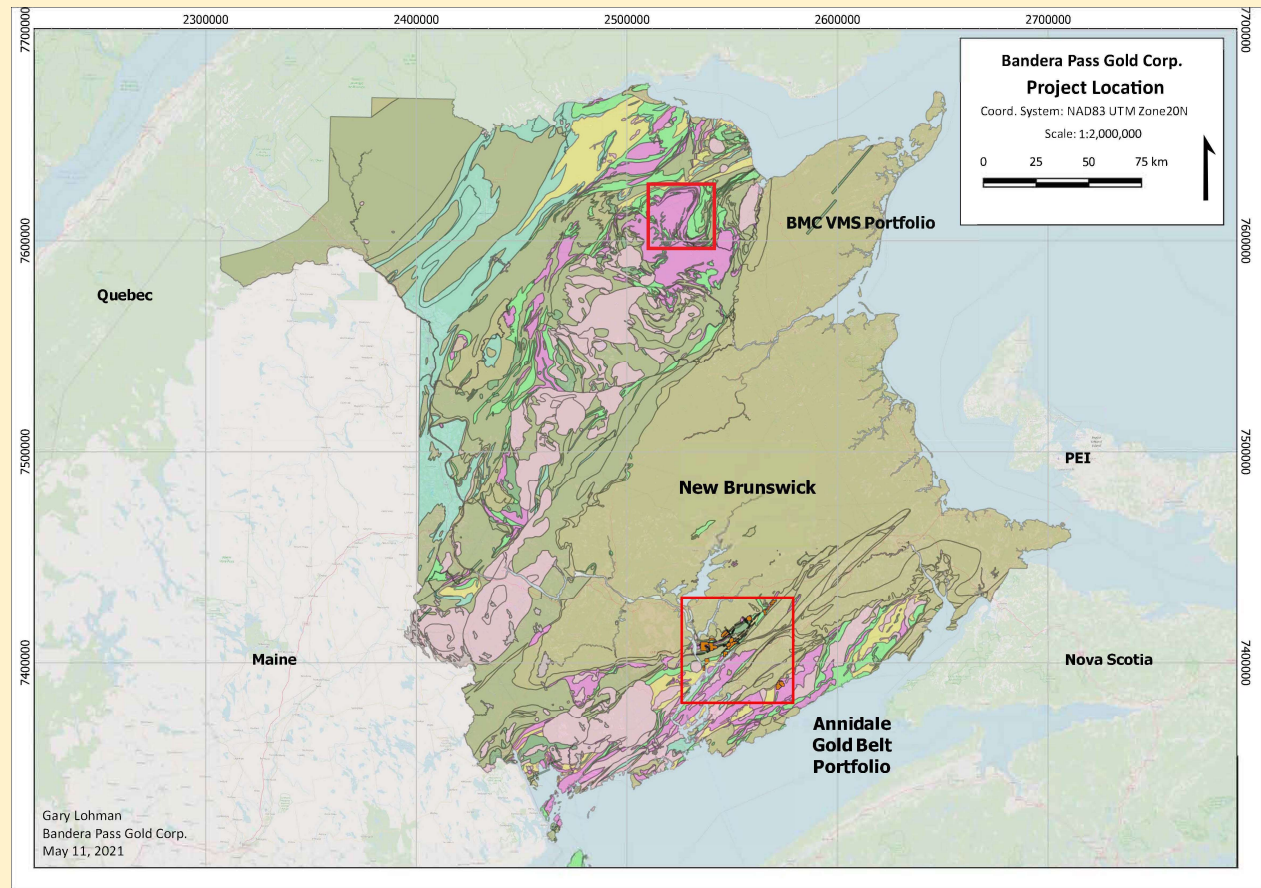
## BANDERA PASS GOLD CORP – NEW BRUNSWICK PORTFOLIO

### ANNIDALE GOLD BELT (Southern NB)

- Approximately 70 km long northeast-trending belt of rocks that lie just to the north of the interpreted Gander-Avalon cryptic suture
- The Annidale Belt comprises a Cambro-Ordovician volcano-sedimentary belt of rocks that are mineral rich, hosting approximately 50 gold and/or base metal occurrences
- The Belt lies just to the north of a major tectonic boundary, the related faulting playing an important role with respect to mineralization, possibly in conjunction with the emplacement of felsic intrusions

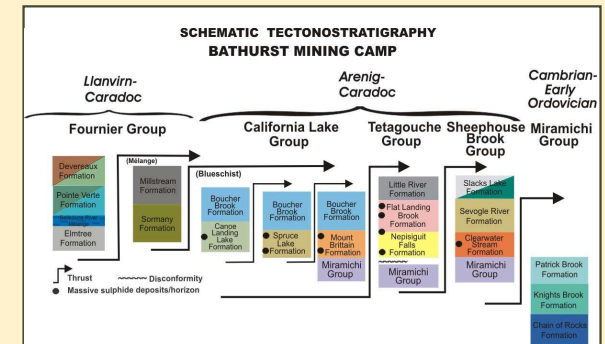
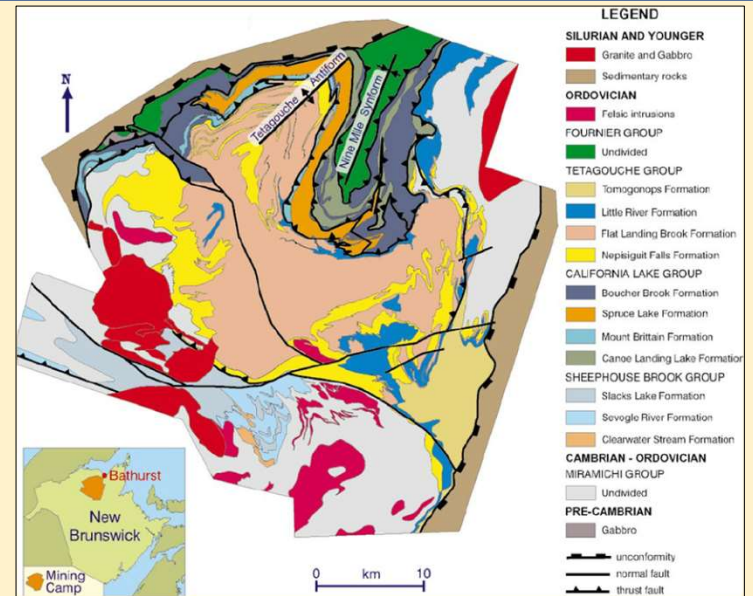
### BATHURST MINING CAMP (Northern NB)

- Approximately 3,800 km<sup>2</sup> in size, the Bathurst Mining Camp (BMC) is known worldwide and host to 45+ volcanogenic massive sulphide (VMS) deposits including the giant Brunswick #12.
- The known deposits are found in 3 geologic groups; California Lake, Tetagouche and Sheephouse Brook.
- The deposit types are classic VMS style, mineralization consisting of zinc, copper and silver rich lead.



## Bathurst Mining Camp (VMS Portfolio)- Geology

- Cambro-Ordovician age volcanic/ sedimentary environment.
- Volcanogenic Massive Sulphides (VMS) deposited in a sediment- covered back-arc continental rift basin.
- Subsequently deformed and metamorphosed during multiple collisional events related to east dipping subduction.
- Rocks of the BMC are subdivided into five groups: the Miramichi, Tetagouche, California Lake, Sheephouse Brook, and Fournier groups, all largely in tectonic contact with each other.
- Lower part of each group is dominated by continental felsic volcanics and upper part by mafic volcanics which are overlain by carbonaceous shale and pelagic chert.
- Most major VMS deposits in the camp are associated with the felsic volcanic rocks.



## Annidale Gold Belt

- Located in southwestern New Brunswick, the Annidale Gold Belt is an emerging Gold District with over 300 square kilometers of ground covered by both major companies and local prospectors.
- The Belt is over 70 kilometers in length and holds 3 historic deposits, the Old Dick Copper Mine, Devil's Pike Gold deposit, the Bald Hill Antimony deposit and over 50 mineral occurrences (Au, Ag, Cu, Zn, Pb, Sb)
- In the southwest, Globex's Deposit at Bald Hill defined 1 million + tonnes grading 4.65% Antimony (Sb) and associated gold
- Approximately 8 kilometers east, Globex's Devil's Pike Gold deposit outlined 93,000 ounces of gold hosted in a structurally controlled vein system
- Extensive exploration outside of these 2 main deposits has been conducted, defining the size and scale of the overall system
- Bandera Pass Gold Corp. holds approximately 30% of the Annidale Belt in 4 large project areas
- South of the Annidale Belt, Bandera has the Silver Mountain and Gold Mine Gully projects, historic assays running 7 oz/t silver, 2% copper and an estimated 14 g/t gold (1850's)
- Mining friendly jurisdiction, with deep history of exploration and mining and talented labour pool
- Excellent infrastructure, including extensive highway networks and a deep water port at Saint John

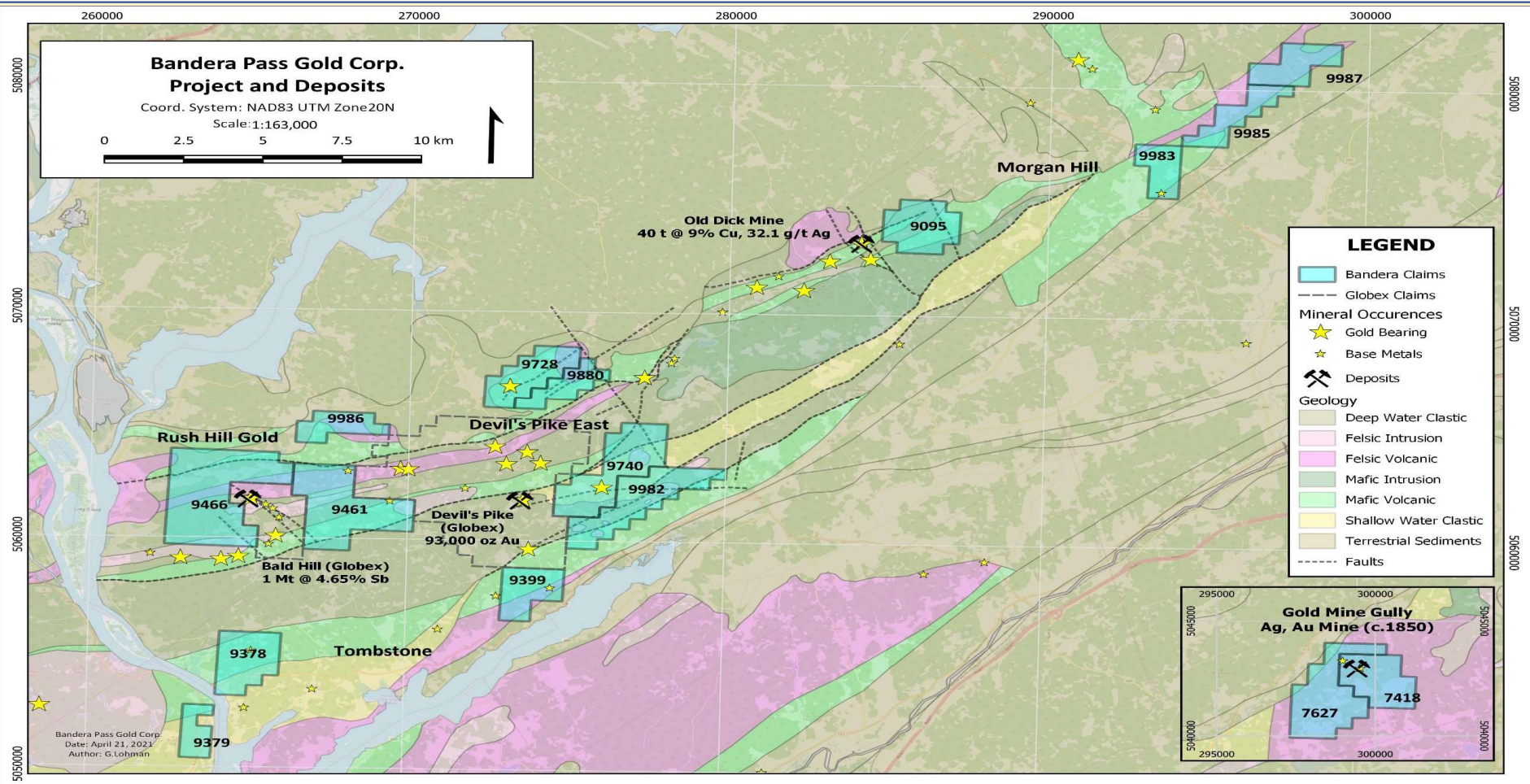


## Introduction

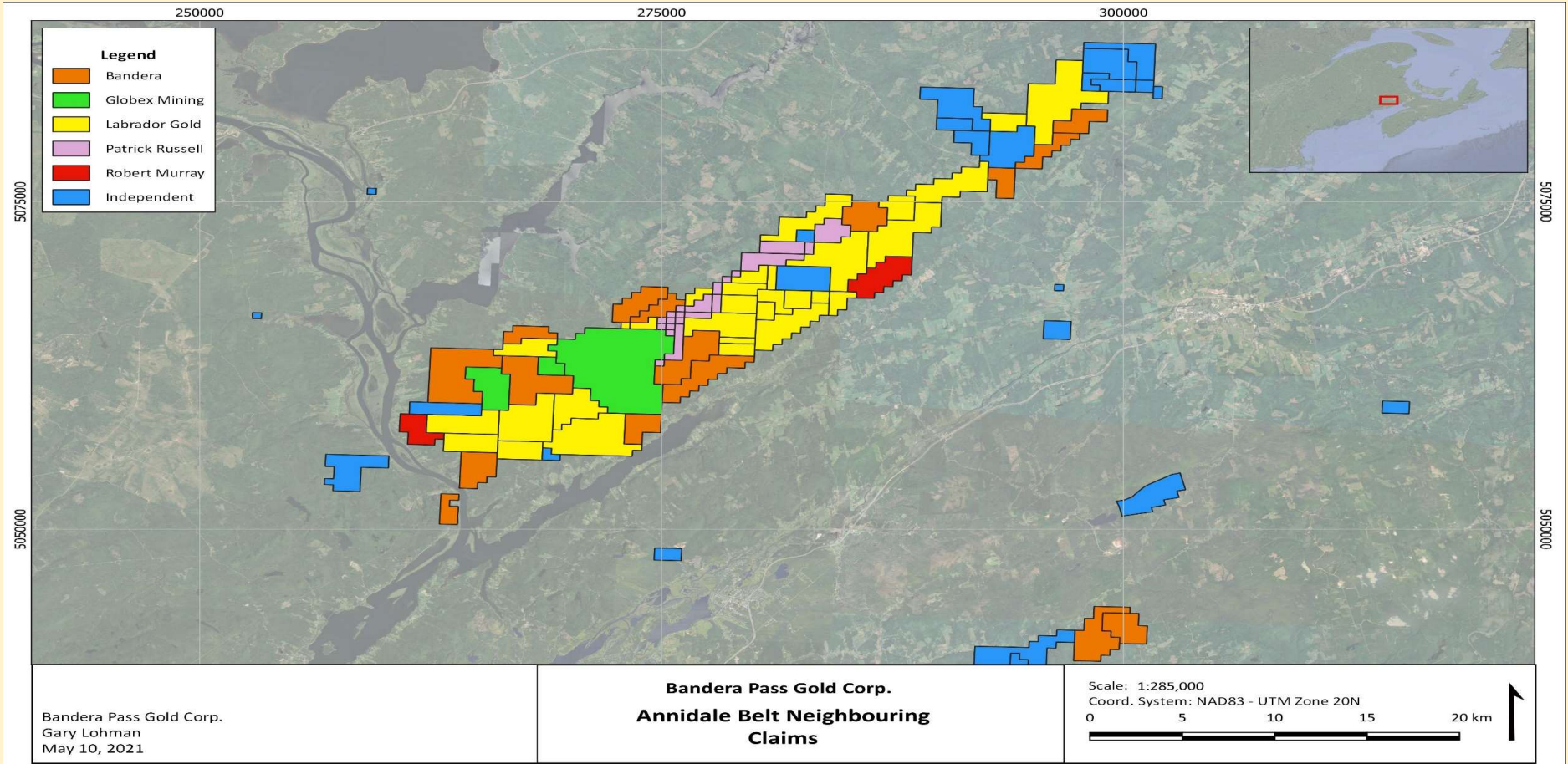
- **Bandera Pass Gold Corp. (Bandera)** is a Private Canadian junior Exploration Company focused on *Precious and Base Metal Exploration* within and surrounding the Annidale Belt, New Brunswick, Canada
- The **Annidale Gold Belt (AGB)** is quickly becoming one of the most important areas for Gold exploration in Atlantic Canada and has several old mines and many registered mineral occurrences throughout the Belt
- **Devil's Pike East Project** consists of two large claim blocks that surround Globex's Devil's Pike Gold (Au) Deposit. The project is located near the Gander-Avalon boundary that hosts several occurrences which exhibit features typical of Orogenic Lode Gold deposits. This project has spectacular assays from a set of quartz veins related to faulting
- **The Rush Hill Gold Project** consists of two large claim blocks that surround the Globex's Bald Hill Antimony (Sb) deposit. Regional faulting and the host felsic intrusion extends onto the Bandera claims and is highly prospective for antimony and base / precious mineralization
- **The Gold Mine Gully/Silver Mountain Project** contains an area that was an active Silver (Ag), Copper and Gold (Au) mine from the 1850's. The properties are contiguous and located in the Caledonian Highlands of southeastern New Brunswick
- **Tombstone Gold Project** has historic gold values up to 10.8 g/t Au in float and 10.0 g/t Au in concentrated Stream silts
- **Morgan Hill Gold Project** fault related copper in contorted sediments



# Annidale Gold Belt - Geology

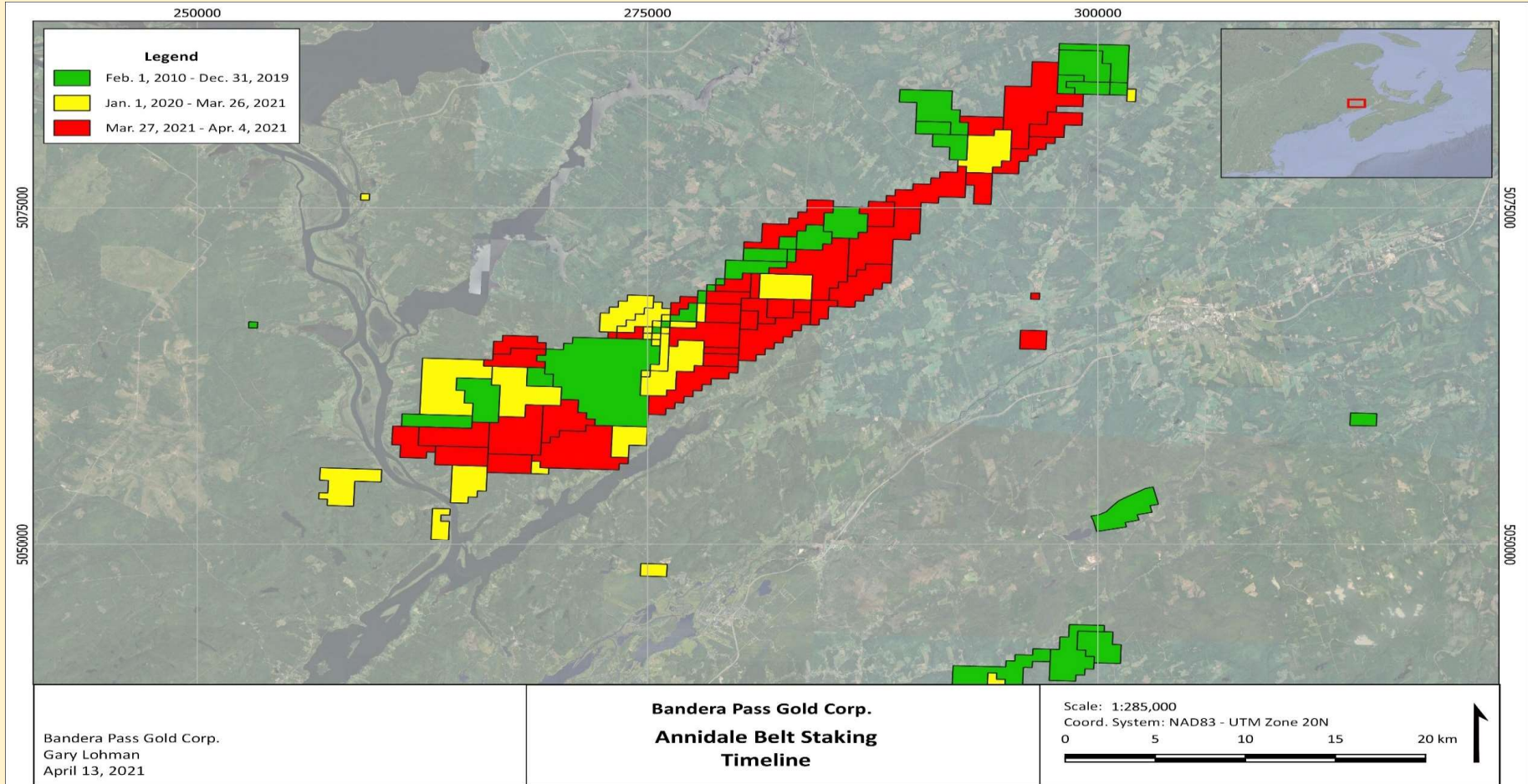


# Who are our Neighbours ?





# Annidale Gold Rush - Claims Staked Between March 27 – April 4, 2021

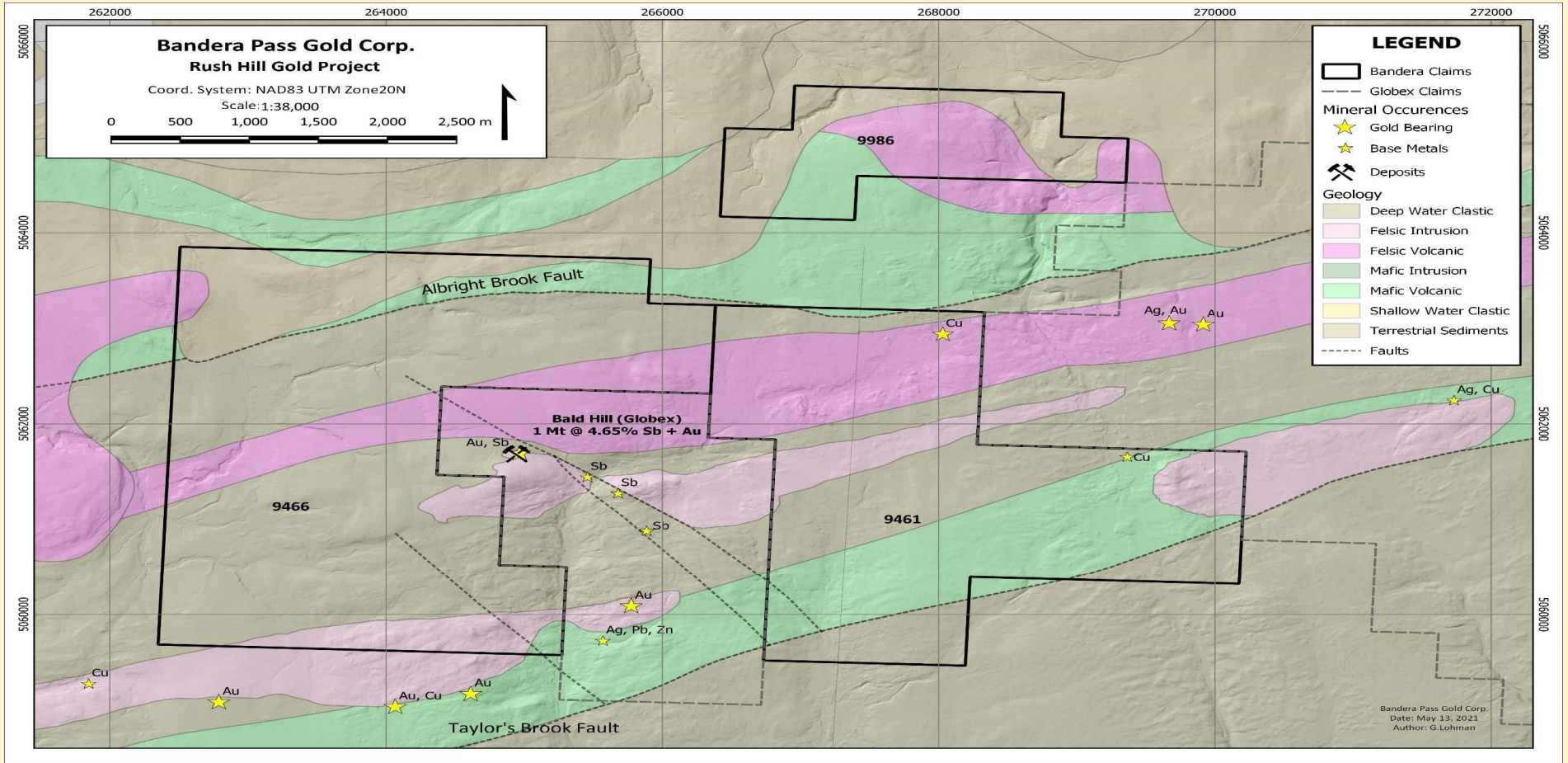


### **Rush Hill Gold:**

- 104 claims on 3 separate blocks located on the southwest end of the mineral rich Annidale Gold Belt, surrounding the Bald Hill Antimony Deposit (1Mt @ 4.65% Sb) and adjacent to the Devil's Pike Gold Deposit (93,000 oz Au), both held by Globex Mining Enterprises Inc.
- Deposits related to major faults and felsic intrusions; the host rocks and related regional structures of both deposits extending on to Bandera's claims
- 13 Gold (Au), Silver (Ag), Antimony (Sb) and Copper (Cu) mineral occurrences on and adjacent to the project area
- UAV magnetic survey planned to delineate the geological units and main fault structures that host the Au and Sb mineralization
- Prospecting and geological mapping to follow
- Received New Brunswick Prospectors Assistance Grant, 2021



# Rush Hill Gold Project

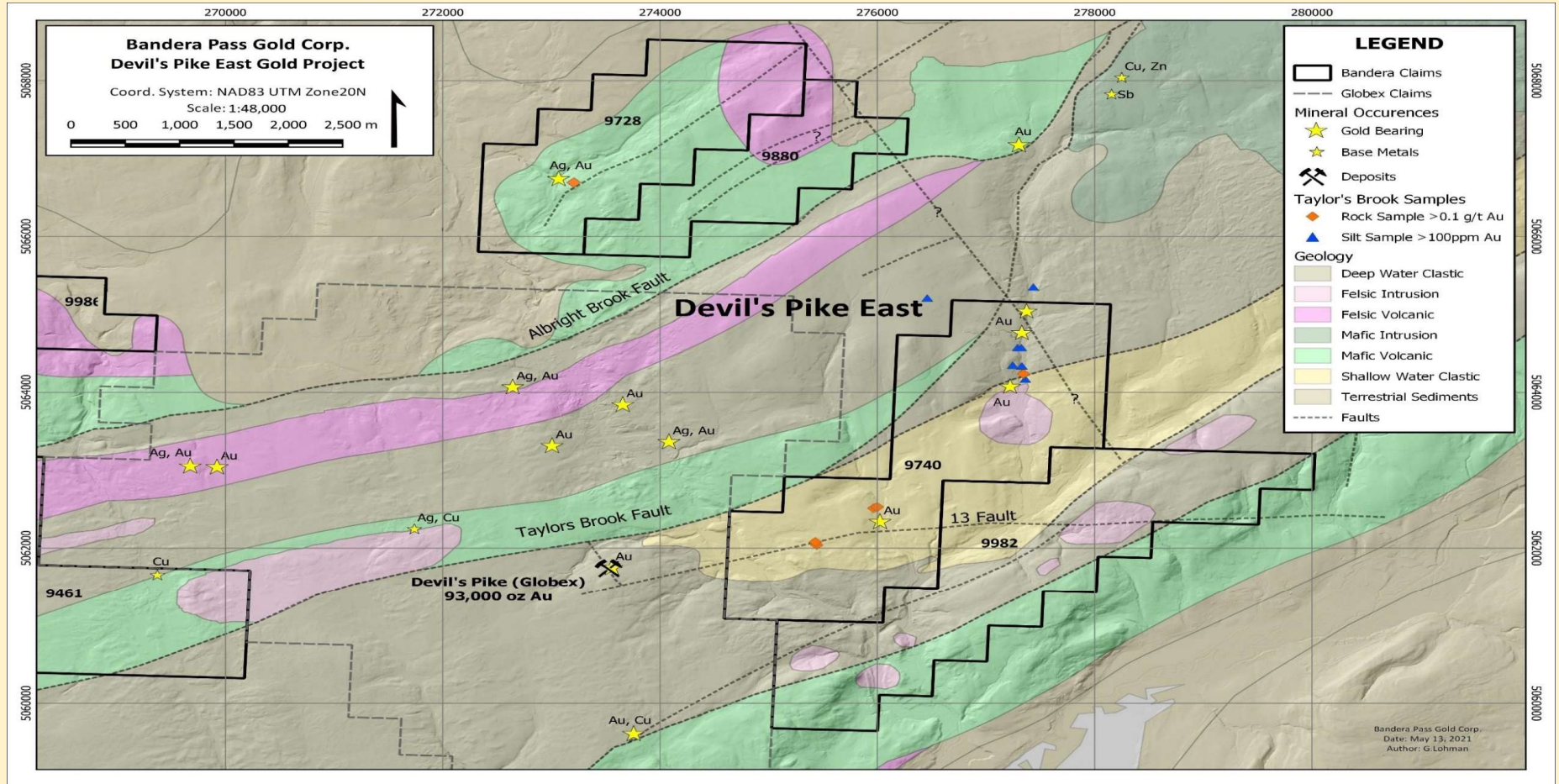


### **Devil's Pike East**

- 94 contiguous Claims on 2 blocks, the properties located in the centre of the Annidale Gold Belt, surrounding the east and north boundaries of Globex's Devil's Pike Deposit property
- On Claims 9728 and 9880, Henderson Brook follows the trend of a NE-SW trending fault cutting altered mafic volcanics and metasedimentary rocks
- At Arseno Falls, several large quartz veins, up to 6 meters in width, cut the units hosting silver mineralization (Ag), arsenopyrite (As), pyrite (Fe), sphalerite (Zn), chalcopyrite (Cu) and galena (Pb)
- Best sample assayed at 38 ounces silver, 0.79% Cu and minor gold
- Recent sampling returned 0.5 g/t Au, 0.79% Cu, 0.18 % Sb
- Soil, rock and silt sampling over the past 40 years highlighted several untested targets within the project area that require follow-up
- Claims 9740 and 9982 lay 2 kilometers directly east of Globex's Devils Pike 93,000 oz Au deposit; a N-S trending vein system between the E-W trending "Taylor's Brook Fault" and "13 Fault". Both of these faults cross onto Bandera's property
- Property is dominated by Henderson Brook and East Scotch Settlement sediments and the East Scotch Settlement mafic volcanics
- Taylor's Brook is a linear brook that trends N-S between the Taylor's Brook Fault and 13 Fault, same as Devil's Pike East Deposit
- Elevated silt and rock samples along the brook indicate there is potential for significant gold and copper mineralization
- Along the 13 Fault, several rock samples returned elevated gold



# Devil's Pike East Project

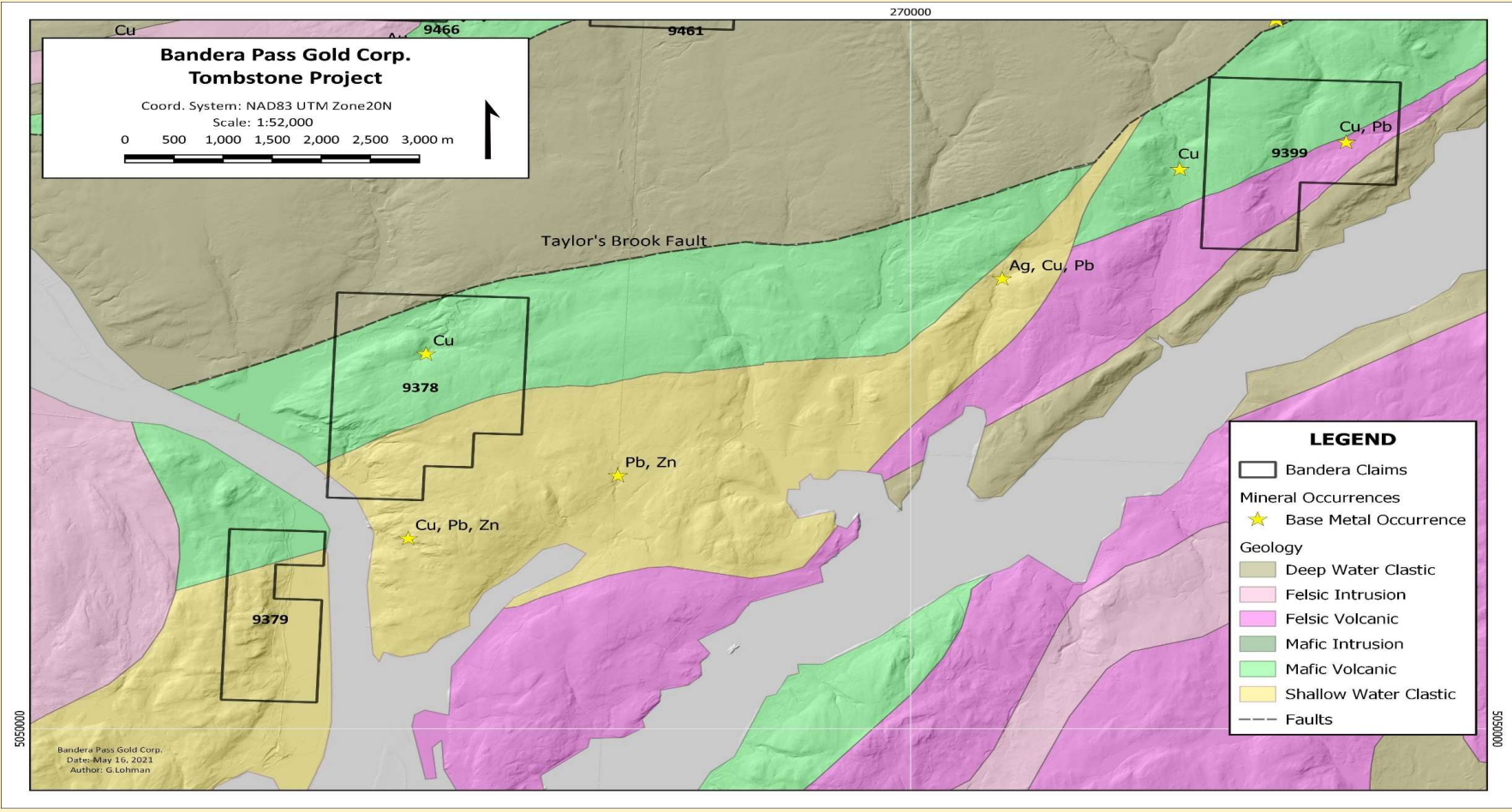


### Tombstone Gold Project:

- 46 claims in 3 blocks located south and east of Globex's Bald Hill Antimony and Devil's Pike Gold deposits where base metal mineral occurrences are found hosted by volcanics
- To the south, historic exploration identified up to 10 g/t Au in concentrated stream silts, the heavy mineral samples containing visible gold
- Recent sampling located Au in both float and silt samples draining the creeks
- To the east, fault related epigenetic veins host Cu and Pb mineralization
- Float samples have returned up to 10.8 g/t Au (0.35 oz)

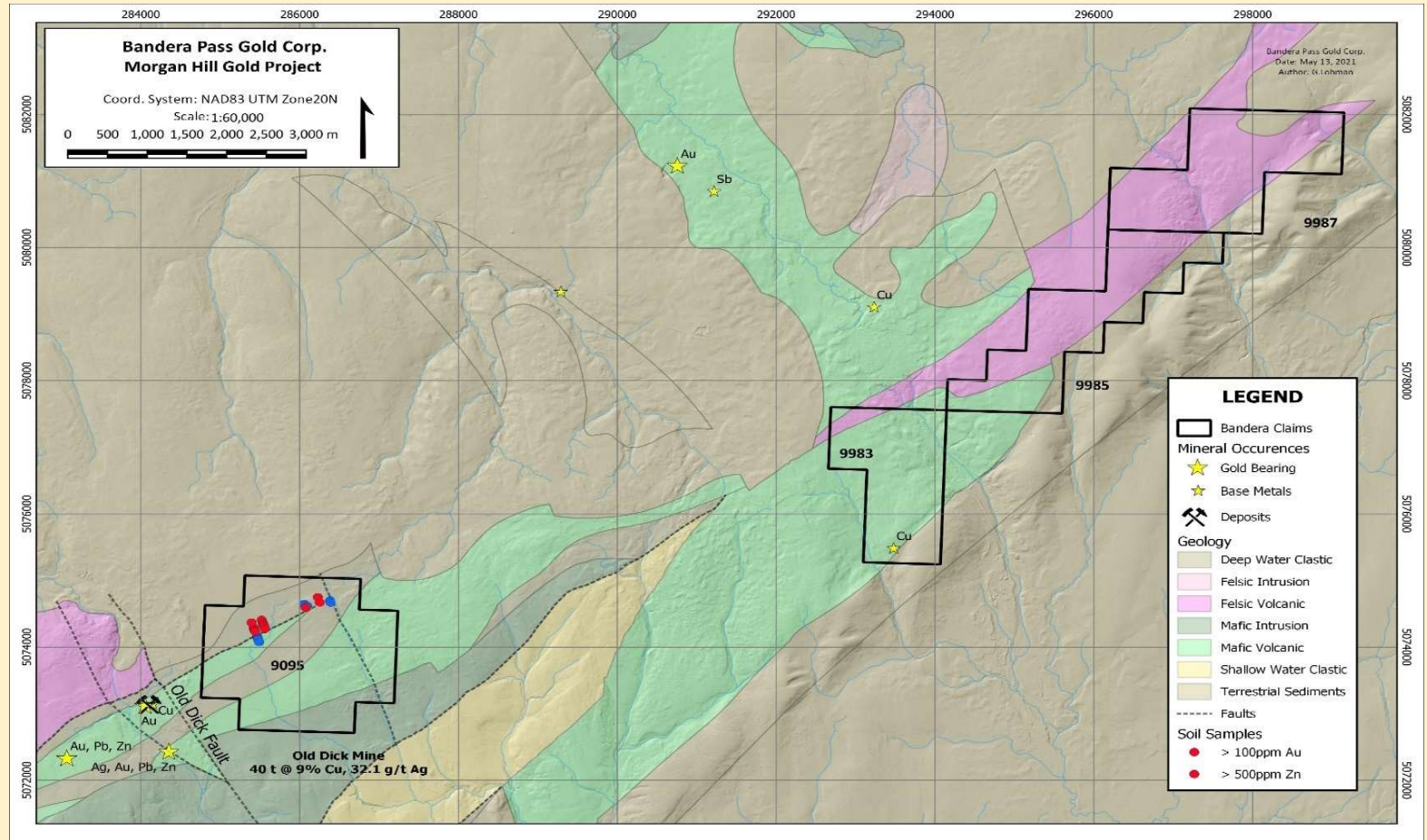


# Tombstone Project



## Morgan Hill Project:

- 73 claims on 4 blocks located in the northeast extension of the Annidale Belt
- Greenfield exploration along the northeast extension of the Taylor Brook fault, a regional structure with both previous and base metal mineral occurrences along strike to the southwest
- Several mineral occurrences, Au, Sb and Cu, are found in mafic volcanics to the northeast, a block of which is present in the southern portion of the project area
- Received New Brunswick Prospectors Assistance Grant, 2021



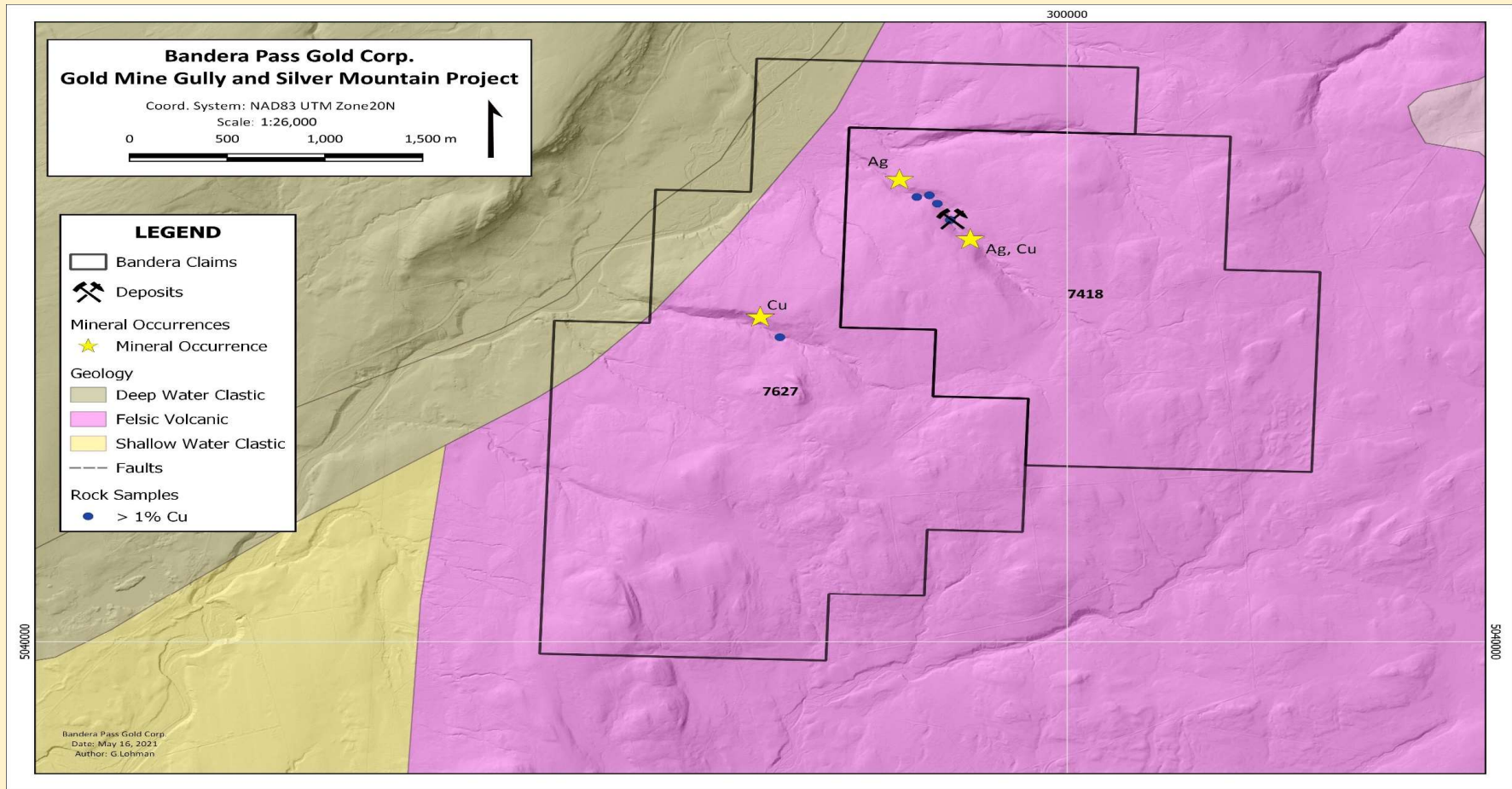


### **Gold Mine Gully and Silver Mountain:**

- Located in the northern Caledonian Highlands, approximately 35 km south of the Annidale Gold Belt. The project is comprised of 50 contiguous Claims on two blocks
- Boulders were discovered containing 3.4 ounces silver leading to the discovery of a high-grade Cu-Ag-Au vein that was actively mined in the 1850's. Actual tonnage is unknown
- More recently, mineralized float and veins were discovered that resulted in limited trenching and shallow channel sampling. Assaying of grab samples containing pyrite, chalcopyrite (Cu), bornite (Cu<sub>2</sub>S), galena (Pb), silver (Ag) and barite (Ba)
- Boulders containing 2 oz Ag and 1.5 % Cu are found within Gold Mine Gully
- The more recent discovery of multiple mineralized veins with significant copper, silver and lead mineralization southeast and west of the original mine site has extended the original mineralized zone an additional 1 kilometer in multiple directions
- Rock samples include:
  - 7.1 oz silver + 3.1% Cu, 2.7% Cu, 2.47% Cu
  - Many assays greater than 1.0% Cu
- The source of the high grade silver has not been discovered



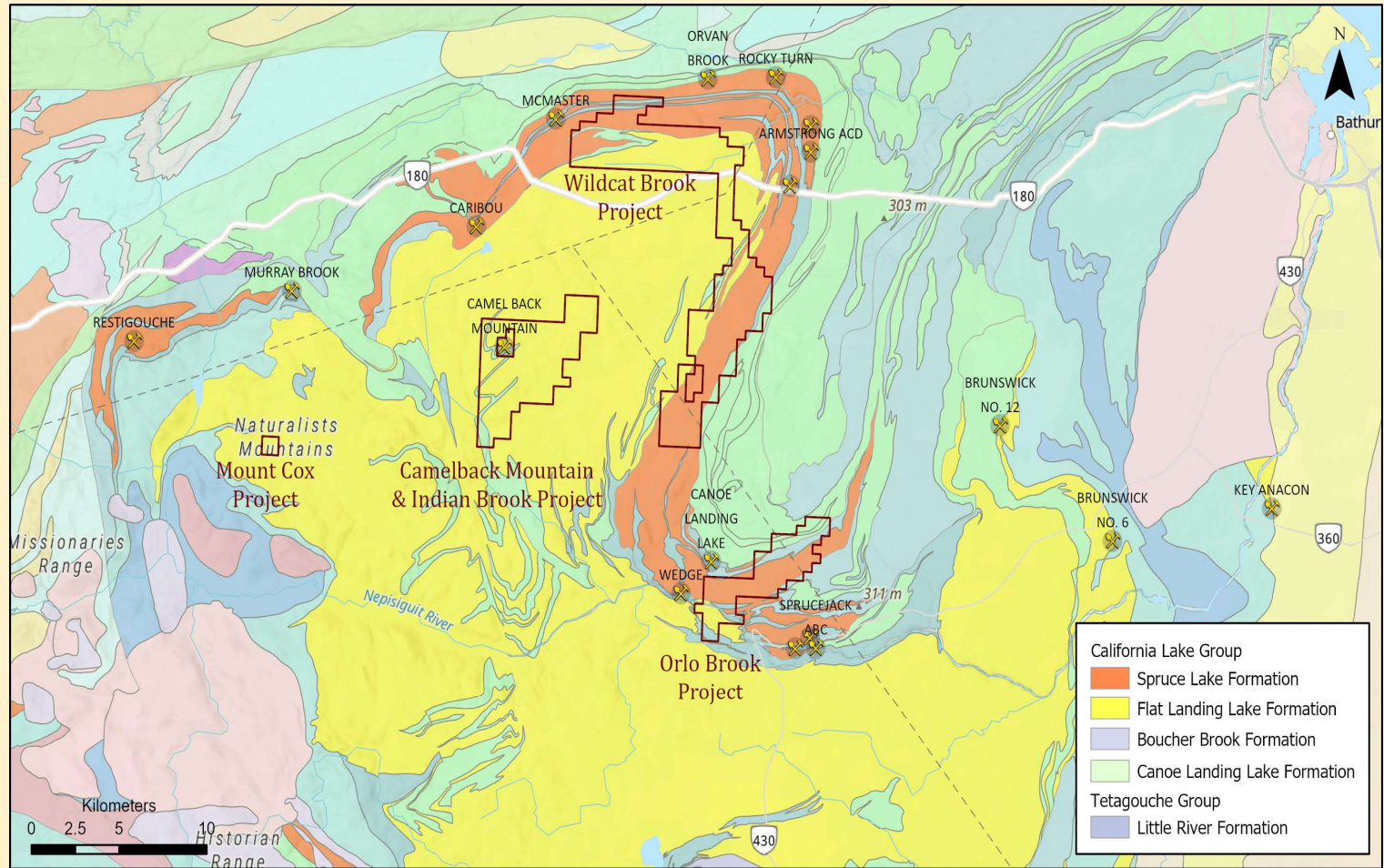
# Gold Mine Gully and Silver Mountain Project



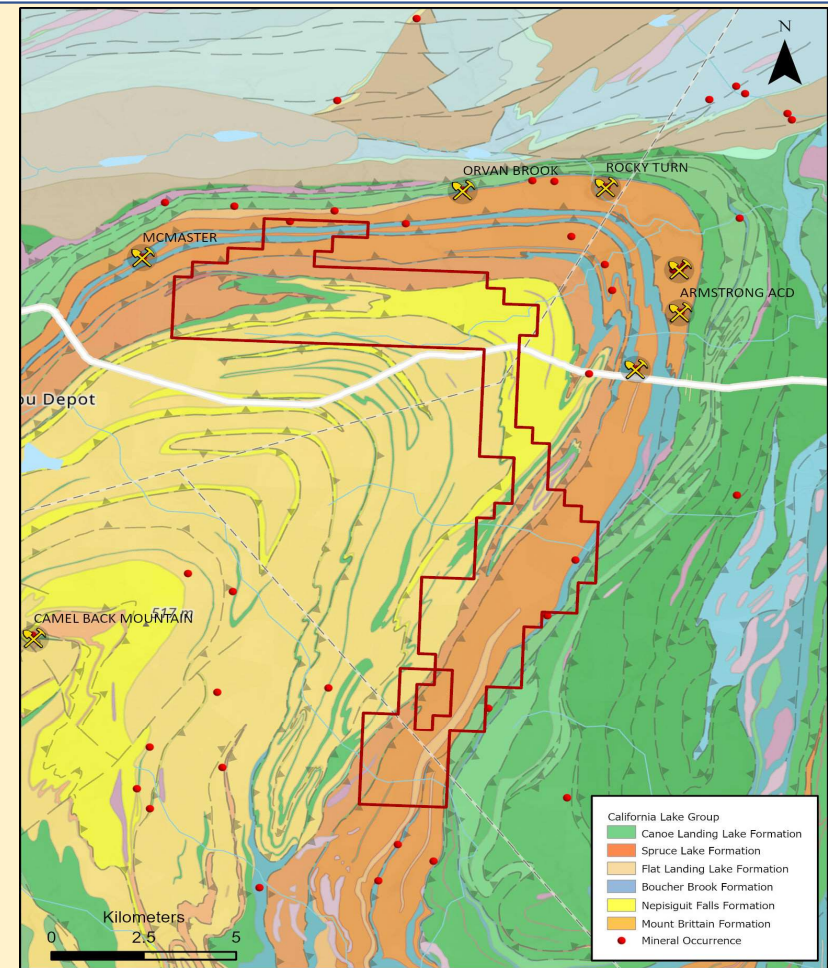
- **Rush Hill Gold Project:**
  - UAV Magnetics to define the major faults and felsic intrusions related to the mineralization
  - Prospecting and soil sampling along priority target horizons identified by the 3D Analysis of the magnetics
  - Priority targets to be trenched or drilled
  
- **Devils Pike East Gold Project:**
  - UAV Magnetics to define the geologic contacts and favourable fault structures
  - 3D analysis of the magnetics will identify the primary and secondary fault systems
  - Prospecting and soil sampling intermediate to the faults will target quartz vein systems similar to Devil's Pike
  
- **Gold Mine Gulley / Silver Mountain Project:**
  - UAV Magnetics and 3D interpretation to locate the extent of the newly discovered mineralized zone
  - Prospecting, soil and / or stream silt sampling and geological mapping of priority targets
  
- **Tombstone Gold Project:**
  - Prospecting and silt sampling to validate the historical results
  
- **Morgan Hill Gold Project:**
  - Basic prospecting and soil / stream silt along and proximal to major fault structures targeting copper mineralization
  - Geophysics over priority targets.



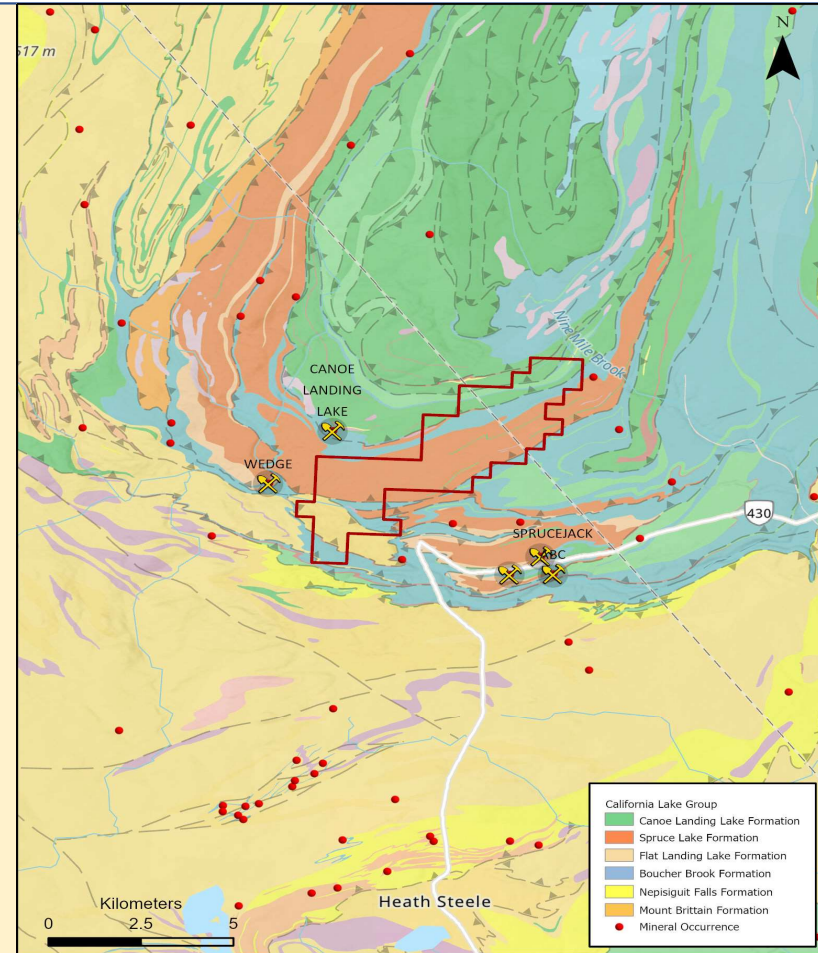
- Portfolio Acquired from OSISKO METALS INC. November 2021 (100%)
- Acquired all Geophysical data including Titan 24 Surveys
- Includes: Orlo Brook, Wildcat Brook, the Camel Back Mountain Deposit & Mount Cox Projects
- The project area covers a large portion of the California Lake Group, which hosts 13 VMS deposits including Trevali Mining Corporation's Caribou mine, presently in production.
- Poorly explored with modern technology, data processing and 3 D modeling, this land package offers a unique opportunity for discovery in a world class mining district.



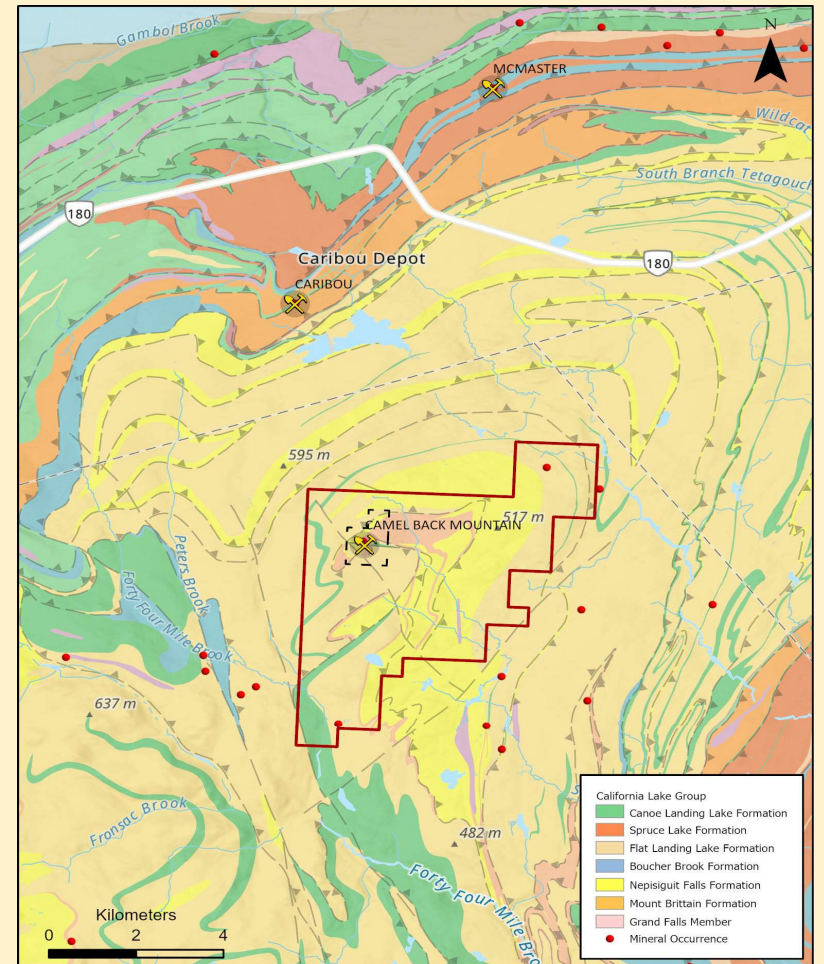
- 5,610 hectares (56.1 km<sup>2</sup>) along the fold nose and eastern limb of the Tetagouche Anticline.
- Large ground position within the California Lake Group immediately south of the MacMaster, Wildcat Road, Orvan Brook deposits.
- Under - Explored.
- 4 target areas identified, T1 and T2 along the Caribou Horizon, T3 and T4 to the south covering modeled Aerodat and MegaTEM anomalies, southern extension of the Armstrong A, B and C occurrences.
- Next steps – geophysical data modeling by EarthEx and ground exploration.



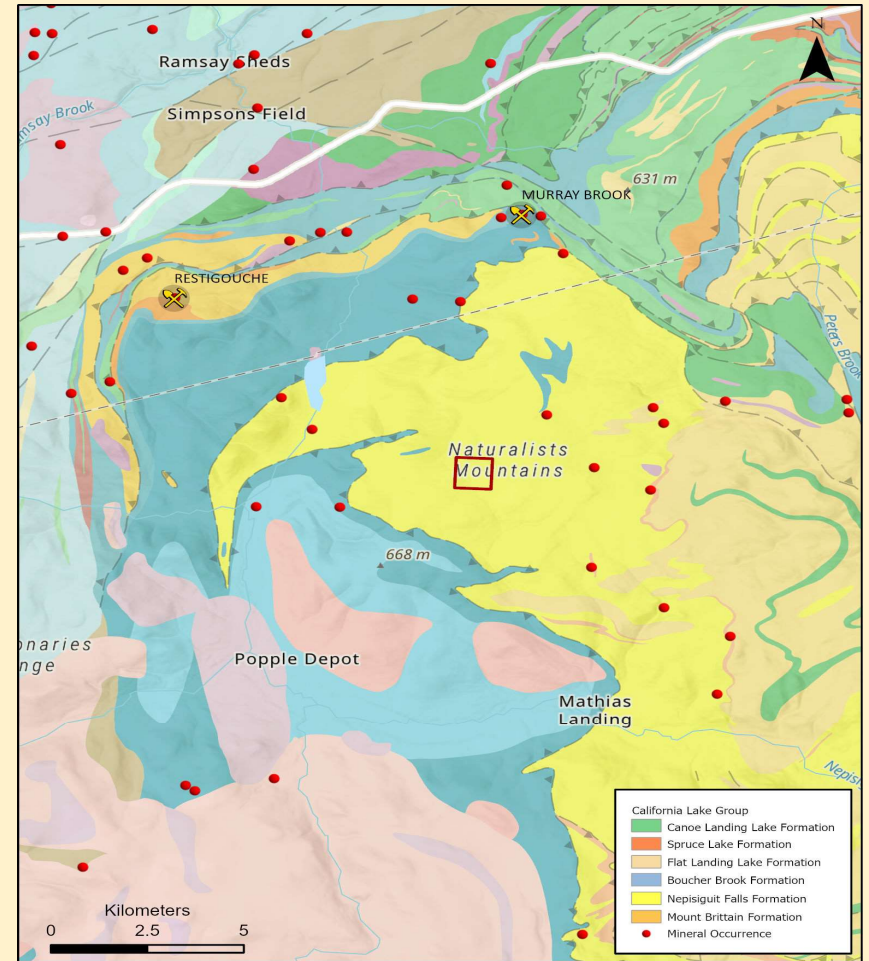
- 1,672 hectares (16.72 km<sup>2</sup>).
- On the west flank of Nine Mile Metals covering a large portion of the California Lake Group volcanics.
- Southwest boundary adjacent to the Canoe Landing Lake and Wedge deposits.
- Geophysical modeling of magnetics, EM and gravity completed; 4 target areas defined by EM surveys in 2018, 1 drill hole completed.
- Hole is capped, target not explained.
- Recommendations - deepen the capped hole and conduct EM surveying on remaining targets +/- drilling.
- EarthEx to reprocess the regional Aerodat and MegaTEM airborne.



- 2,860 hectares (28.6 km<sup>2</sup>) covering the Camelback Zn, Pb, Cu deposit, a 200,000 tonne VMS deposit grading 5 – 7% Zn + Pb.
- Land package is situated on the Brunswick Horizon and within the Nepisiguit Falls Formation which hosts the Brunswick #6 and Brunswick #12 mines.
- The deposit is centered on drill hole 96-6, which intersected 17.9m of massive and semi-massive sulphide with a 4.3m section assayed 3.94% Pb, 8.95% Zn and 41.9 g/t Ag followed by a 12.3m copper zone grading 2.05% Cu.
- Hole 97-10, drilled on the same section in the opposite direction returned 5.1m of 2.25% Pb, 8.86% Zn and 24 g/t Ag.
- A large data base exists covering the deposit including drilling and deep penetrating geophysics (Titan 24).
- 2D and 3D modeling of Titan Induced Polarization (I.P.) and Magnetotelluric (M.T.) survey , data completed by Osisko, targets defined, cost approximately \$ 24 million.
- Next steps includes the reprocessing of the geophysics and Mira Geoscience 3D data modeling in order to prioritize drill targets.



- 88 hectares (0.88 km<sup>2</sup>).
- Similar geology and 3km west of the Devil's Elbow deposit (362,000tonnes / 1.2% Cu).
- Underlain by Nepisiguit Falls sediments.
- Property covers two weak coincident MEGATEM and Gravity anomalies.
- Mineralization associated with I.P. and EM geophysical anomalies as well as soil geochemical anomalies.
- Geological mapping and soil sampling is recommended.





**Wildcat Brook Project:**

- EarthEx Geophysical Solutions to reprocess and 3D Model Regional Aerodat and MegaTEM data.  
Utilizing Proprietary 3D Modeling – AI algorithms & Interpretation
- Ground exploration over and adjacent to previously defined target areas.

**Orlo Brook Project:**

- EarthEx to reprocess and 3D Model Regional Aerodat and MegaTEM data.  
Utilizing Proprietary 3D Modeling – AI algorithms & Interpretation
- Geological mapping, prospecting and validation of existing targets.

**CamelBack Mountain Project:**

- Reprocessing of the geophysical database including the deep penetrating I.P and M.T. survey data.  
Utilizing Proprietary 3D Modeling – AI algorithms & Interpretation
- 3 D modeling of all drill holes and geophysical data.
- Drilling of priority targets.

**Mount Cox Project:**

- Geological mapping and soil geochemistry.



## Bandera Pass Gold Signs Strategic Agreement with EarthEX Geophysical Solutions (MB) AI & 3D Modeling Analysis



**BANDERA PASS GOLD**

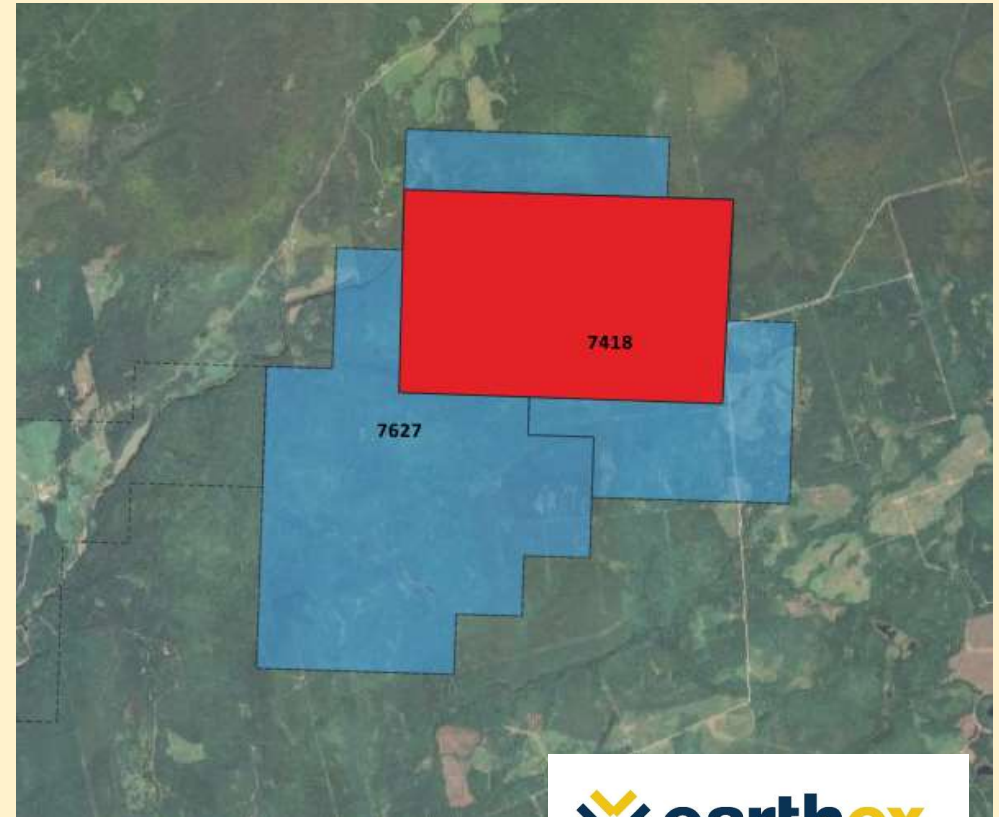
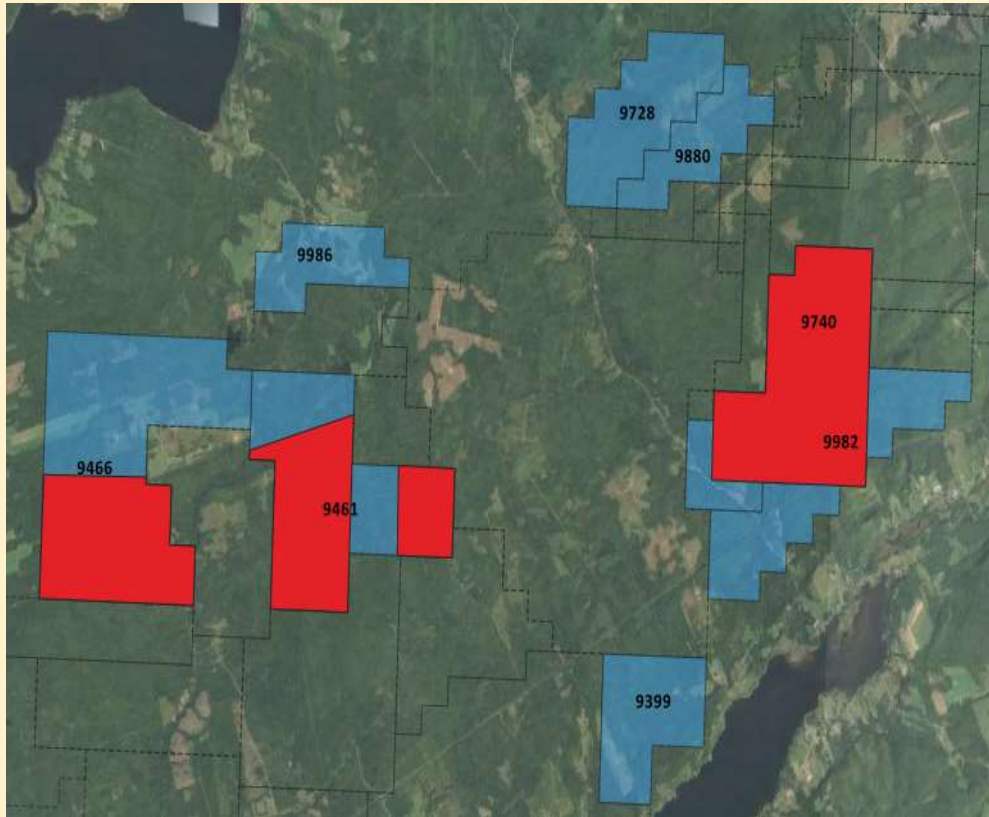
Signs Agreement with  
**EarthEX GeoPhysical Solutions**



- Bandera Pass Gold Signs Strategic Partnership with EarthEX Geophysical Solutions (MB) for Artificial Intelligence & 3D Analysis - Interpretation Modeling
- Initiated 1<sup>st</sup> Stage of UAV Aerial Surveying over :
  - (Rush Hill Gold, Devils Pike East Gold & Gold Mine Gully)
- To Define the extension of the Bald Hill Antimony Deposit and satellite deposits on our properties (Eastern/Western Flanks of Bald Hill Deposit) – (Rush Hill Gold)
- To explore the Eastern/Western extensions of Devils Pike Deposit and Fault Trend (Devils Pike East Gold)
- To define the extent of the recently discovered mineralized zone at Gold Mine Gully
- To define the stratigraphic boundaries and structural controls of the larger Annidale Fault System



EarthEX Geophysical UAV Exploration Plan 2023 (UAV – Rush Hill Gold, Devils Pike East Gold & Gold Mine Gully)



Bandera UAV Grids (Red) to be flown using EarthEx's UAV Borne Magnetics



## FIELD TRIP – (GOLDMINE GULLY – SILVER MOUNTAIN)

- Main Vein, Gold Mine Gulley
- Historic assays up to 106 g/t Ag and 1.5% Cu
- Visible copper mineralization including Chalcopyrite, Bornite, Malachite, Azurite and Tenorite.
- Locally abundant, coarse grained Galena (top left, next slide) High Lead Results Expected
- Crosscutting veins visible suggesting multiple pulses of mineralization
- Numerous quartz vein splays and rubble along the creek
- NEW uncovered vein outcrop located in Brook 800 meters north of the Main Vein
- 17 samples submitted to BV Labs for assay



FIELD TRIP (GOLDMINE GULLY – SILVER MOUNTAIN) SAMPLES



## FIELD TRIP – (DEVIL'S PIKE EAST)

- Mineralization discovered in 1989, initial grab sample within a 6 m wide vein system assaying 1182.86 g/t Ag, 0.55 g/t Au, and 0.79% Cu
- Multiple rusty, hematized vein swarms, breccia and quartz vein rubble found along Henderson Brook
- Intensely Pyritized volcanics / Gossans along the Brook
- Historic soil survey identified 3 separate soil anomalies along Henderson Brook with elevated Au, As and Cr
- 13 soil samples analyzed by XRF, results confirming elevated Cr.
- 17 rock samples submitted to BV labs for Multi-element assay



## FIELD TRIP – (DEVIL'S PIKE EAST)



- The 13 Fault (right) is a parallel structure to the Taylor's Brook Fault, the faults bounding Globex Mining's Devils Pike Gold deposit (93,000 ounces inferred) to the west
- 8 stream silt samples collected along Taylor's Brook, north of the Taylor's Brook Fault
- Samples submitted to BV Labs for Au and multi-element analysis



## Management & Technical Team

### **Patrick J. Cruickshank, MBA**

#### **President & CEO**

Mr. Cruickshank is the Founding – President & CEO - Bandera Pass Gold Corp.

Mr. Cruickshank, received his MBA at Canada's Highly Prestigious York University – Schulich School of Business. Patrick brings a wealth of experience from the Private Wealth Management Sector, Protecting & Managing Wealth for over 15 years @ Merrill Lynch, Citigroup Capital Markets, Smith Barney and Legg Mason to name just a few. Patrick was an NFLPA Financial Advisor for over a decade helping financially educate, wealth creation & Long-term wealth preservation strategies for NFL Professional Players and their families.

Mr. Cruickshank also serves on the Boards of:

Nine Mile Metals Limited (Vancouver, BC)  
Fiddlehead Mining Corp (NB, Canada)  
Thistle Resources Corp (NB Canada)

Royal Stewart Resources Corp. (NB, Canada)  
Minotaur Atlantic Exploration Ltd (NS, Canada)  
Atacama Cooper Exploration Limited (Canada & Chile)

Mr. Cruickshank specializes in establishing and growing companies, driving shareholder value through a long-term business strategy from inception to growth to exit. Mr. Cruickshank is often invited to speak @ Resource Summits in Canada, Chile, Peru, London & Germany. Patrick is an active Panel Guest Speaker of the Toronto Stock Exchange Venture (TSX-V) & the Santiago Stock Exchange (SSE) Industry Events. Mr. Cruickshank is frequently interviewed on Radio Show & Industry Publications within the Resource Sector.

Mr. Cruickshank, is a Former Canadian Olympic/U23 Soccer Player and US NCAA D1 Collegiate Player. Patrick is also a very highly decorated US & Canadian Coach, from being a Professional Soccer Player to coaching Canada's Women to University of Mississippi to US Olympic Development Staff Coach. Patrick holds his US Soccer "A" License & Canadian National Coaching Licenses.

Patrick now enjoys coaching his 6 children.





## Management & Technical Team

### **Gary Lohman, B.Sc., P.Geo**

#### **COO & SVP Director of Exploration**

Mr. Lohman is a Founder and Chief Operating Officer of Bandera Pass Gold Corp. As an exploration geologist, he has 40 years of experience in both precious and base metal exploration within the Americas Management experience within and outside of the mining industry.

Skilled in geological, geochemical and geophysical exploration techniques in a wide variety of settings including Volcanogenic Massive Sulphides (VMS), Porphyry & IOCG (Copper/Gold) Style Deposits. Experience includes evaluations / research conducted on bonanza grade and bulk tonnage gold-silver properties in Canada, Mexico, California, Ecuador & Chile. Evaluated and conducted research on a variety of Industrial mineral projects including graphite, titanium, zeolites and building stone.

Mr. Lohman is also the President of Atacama Copper Exploration Limited in Chile. A Private Canadian Exploration Company focused on Large Scale IOCG – Cobalt Exploration.

Mr. Lohman also serves on the Boards of:

Nine Mile Metals Limited (Vancouver, BC)  
Fiddlehead Mining Corp (NB, Canada)  
Thistle Resources Corp (NB Canada)

Royal Stewart Resources Corp. (NB, Canada)  
Minotaur Atlantic Exploration Ltd (NS, Canada)  
Atacama Cooper Exploration Limited (Canada & Chile)

Gary is based in Bathurst, New Brunswick throughout the year, conducting exploration in addition to working with various agencies within the provincial government including the Department of Mines and Forestry.



### **Stuart Wells, B.Sc., P. Geo.** **VP of Exploration**

**Stuart** is a senior exploration geologist with over 30 years' experience spanning multiple continents and deposit types but specializes in VMS style deposits (mineral exploration & mine geology) in the Bathurst Mining Camp, NB.

Most recently, for the past 5 years, Stuart was the Senior Project Geologist for Trevali Mining Corporation's New Brunswick exploration team, where he oversaw the company's mineral exploration and resource expansion activities at the producing VMS deposit, Caribou Mine. During his 5+ years with Trevali, Stuart either led or was directly involved in several successful exploration programs in surface exploration and underground drilling operations.

Stuart is fluent in a host of GIS and geological modelling software including MapInfo, QGIS, ArcGIS, LeapFrog Geo and Discover3D.

Stuart's career has spanned several decades and has been a member of the geology Team at; Trevali Corporation, Stratabound Minerals, Xstrata Zinc, Noranda Exploration, Shear Exploration and Shell Canada Resources Ltd. Stuart also worked for both the NF Department of Mines and more recently, the NB Department of Energy and Mines.

Stuart graduated with a Bachelor of Sciences (Geology) from Memorial University, St John's, Newfoundland, in 1979.



**Graham W. Halcrow, B.Sc., UNB**

**Exploration Geologist – GIS Specialist**

Mr. Halcrow is a recent graduate from the University of New Brunswick in Fredericton. He completed a Bachelor of Science in Earth Science in 2023 and immediately entered the exploration industry.

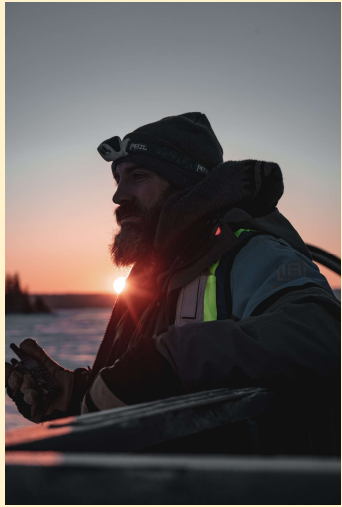
During his undergraduate, Mr. Halcrow studied and participated in research on styles of mineralization of highly fractionated porphyry tin-tungsten-molybdenum systems directed by Dr. Lentz, PhD., Research Chair in Economic Geology, University of New Brunswick.

Mr. Halcrow is applying his mineral deposits knowledge to a new variety of mineral systems including VMS and IOCG models specifically in the World-Famous Bathurst Mining Camp (BMC).

Mr. Halcrow is proficient in QGIS and ArcGIS in addition to Geosoft and Mira modeling software.

Graham resides in Fredericton, NB where he enjoys long-distance cycling and backpacking.





**DANIEL CARD, P.GEO, RPGeo, PRESIDENT**  
**EARTHEX GEOPHYSICAL SOLUTIONS INC.**

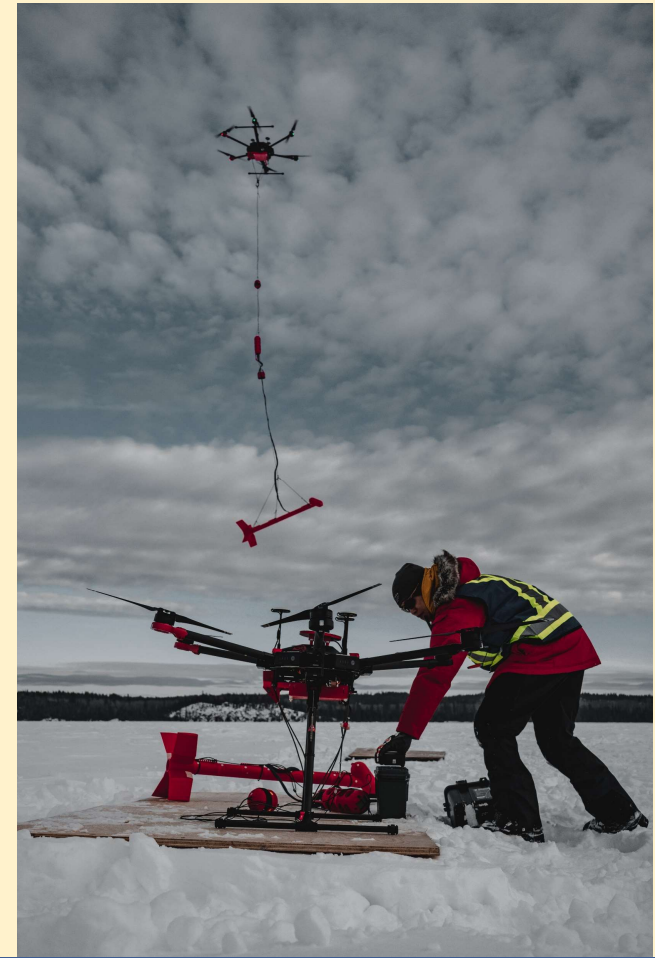
EarthEx Geophysical Solutions Inc was founded in 2014 in Selkirk Manitoba Canada by its Chief Geophysicist, Daniel Card. Mr Card, P.Geo, RPGeo, a professional Geophysicist, who holds a BSc. Hons degree from the University of Manitoba and is currently registered in Canada and Australia.

His career started with Xstrata (now Glencore) where he worked his way up to Project Geophysicist at Raglan Mine in northern Quebec, and then went on to serve at Xstrata’s Western Australian operations Cosmos and Sinclair in the Leinster-Wiluna nickel camp, where he played a key role in the discovery and definition of the 9 MT Odysseus Nickel Sulphide Deposit, which is soon going into production for Western Areas Ltd.

Following his tenure at Xstrata, he went on to work as Senior Geophysicist for Southern Geoscience Consultants in Perth, WA, where he served as the staff electromagnetics specialist. He also served as the technical lead on many mineral exploration projects. He continued as a senior technical consultant to Abitibi Geophysics and an expert peer reviewer for the journal “Exploration Geophysics”.

Since its inception, EarthEx has gained widespread recognition for its scientific accomplishments for its clients & partners.

At EarthEx we are specialized in geophysical prospecting, data interpretation, 3D modelling and target definition for hard-rock minerals, and work with cutting edge technologies and data analysis methodology. EarthEx has become a household name in the acquisition and analysis of high-resolution geophysical data, with a focus on drone and borehole platforms.



### **Kevin A. Vienneau, B. Engineering** Mineral Resource Engineer

Mr. Vienneau has been involved in Mineral Exploration since 2004. Kevin has been heavily involved in the Bathurst Mining Camp Exploration for over 18 years and has extensive experience in the Mining Exploration sector.

Kevin worked with Stratabound Minerals Corp for over 10+ years and brought the company from solely an exploration company to an open pit producing VMS mine at one of their properties. During production, Kevin transitioned to the Mine Production Manager responsible for over 100 employees. His experience also includes field exploration and drill program (QA/QC) protocols design & implementation. Kevin also comes highly skilled in technical GIS database design & management, Resource Estimate Analysis & EIA Authoring for Environmental Impact Assessment Reports to the NB DEM. Kevin has been involved in (5) Resources Estimate and (3) PEA's with 3rd party Engineering firms.

His experience from working at the World Famous Brunswick Mine is invaluable for Bandera Pass Gold Corp, especially for its VMS Portfolio in BMC (Recently purchased from Osisko Metals Inc). A skilled negotiator, Kevin has successfully negotiated with First Nations, Land Owners, Vendors and Government Agencies.

He completed a Bachelor of Engineering Degree in Mineral Resource Engineering from Dalhousie University, NS in 2014. Kevin has also studied for 3 years at Acadia University in Wolfville, Nova Scotia, Canada. Kevin currently serves on the Board of Founders Metals Inc Company helped take the company public in 2021 as well as serving on the Technical Advisory Board of:

- Bandera Pass Gold Corp - Royal Stewart Resources Corp – Thistle Resources Corp

Kevin currently makes Bathurst, New Brunswick his home and is a pillar in the community and currently serves as the President of the Bathurst Marina.





**Ronald Godin, BA., LLB., QC**

**Corporate Strategic Advisor**

A native of Bathurst, New Brunswick, Mr. Godin received a Bachelor’s degree in Political Science in 1972 from the Université de Moncton and being awarded the Governor General of Canada Medal for the Highest Academic Achievement of his graduating class.

Mr. Godin continued his academic journey at the prestigious University of Ottawa Law School and graduated in 1975. Ron became a Crown Prosecutor for the Department of Justice of New Brunswick from 1975 – 78.

He transitioned to a very successful Private Law Practice and in 1994 was appointed Queen’s Counsel where he remained until 2004, when he was appointed by the Legislative Assembly of the Province of New Brunswick as the 1<sup>st</sup> Consumer Advocate for Insurance for the Province of New Brunswick. Mr. Godin held that position until his retirement in 2017.

Mr. Godin has a long list of community service & outreach endeavors. He was the Founding President of the Chaleur Regional Hospital Foundation, Bathurst, NB. Mr. Godin has always been an active speaker at many Legal Forums and participated in various professional committees of the Law Society of New Brunswick and was a regular speaker at the Bar Admission Courses.

Mr. Godin remains an active advocate in his community and mentor. Ron is fluent in French & English. Ron has 2 children and now enjoys spending time with his Grandson in Bathurst New Brunswick.



## Management & Technical Team Structure

Patrick J Cruickshank, MBA  
President & CEO, Director  
Chairman of the Board  
York Univ. – Schulich School of Business (MBA)

Gary Lohman, B.Sc., P. Geo.  
Director of Exploration & COO, Director  
Technical Advisory Committee  
University of Toronto

Kevin A. Vienneau, B. Engineering  
Mineral Resource Engineer  
Technical Advisory Committee  
Dalhousie University, Nova Scotia

Stuart Wells, B. Sc., P.Geo.  
VP of Exploration  
Memorial University, NFLD

Graham Halcrow, Geo., B.Sc.,  
Exploration Geologist  
GIS Analyst & Specialist  
University of New Brunswick,  
Fredericton

Ronald Godin, B.A., LLB, QC  
Corporate Strategic Advisor  
Universite de Moncton, NB  
University of Ottawa Law School, ON

Alex Cameron, Technician  
Core Technician, Heavy Equipment  
Bathurst, NB Canada

Daniel Card, B.Sc., P.Geo, RP.Geo  
EarthEX Geological Solutions  
Technical Advisory Committee  
Univ. of Manitoba

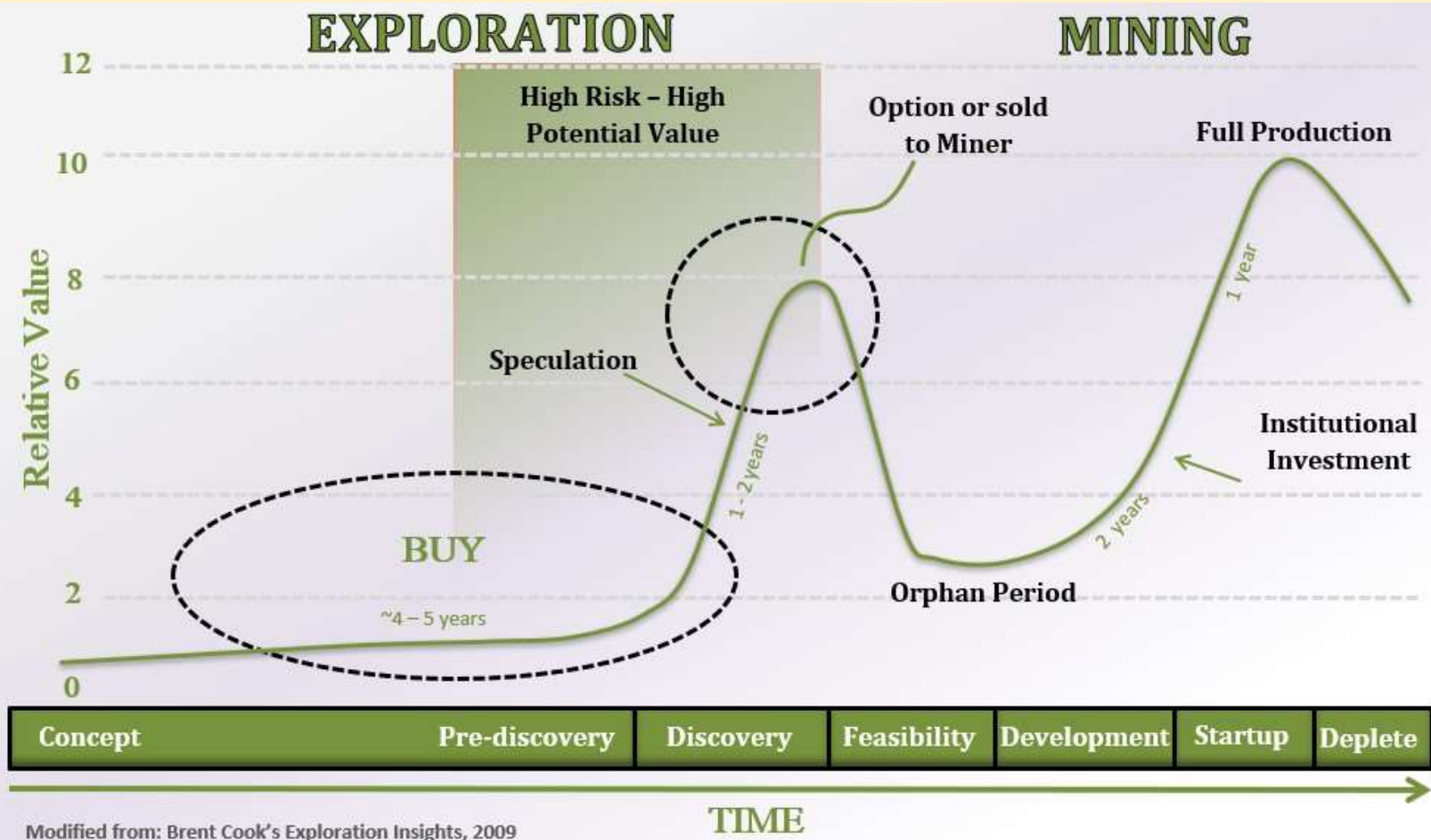
Legal Counsel: Fogler, Rubinoff, LLP  
(Toronto, Ontario)

Bandera Pass Gold Corp.  
325 Munro Street, Bathurst, New Brunswick, Canada E2A 3Y4  
506-804-6117

Legal Counsel: Byrne, Lenihan  
(Bathurst, New Brunswick)



Know "The Investor Life Cycle"



Modified from: Brent Cook's Exploration Insights, 2009





For Enquiries Contact:



**PATRICK J. CRUICKSHANK, MBA  
PRESIDENT & CEO**

[patrick@banderapassgold.com](mailto:patrick@banderapassgold.com)  
506-804-6117



**GARY LOHMAN, P. GEO  
DIRECTOR OF EXPLORATION, COO**

[gary@banderapassgold.com](mailto:gary@banderapassgold.com)  
905-299-8552

